

Rampion 2 – Project overview

Umair Patel, Project Lead

May 2025

RWE

MACQUARIE

ENBRIDGE

Subject matter of the presentation, which can also be very long

Rampion 2 Offshore Wind Farm



Offshore Elements:

- 160 km² turbine array areas 13-26km off Sussex coast
- Up to 90 turbines - up to 325m (max) turbine height
- Up to 3 offshore substations / up to 4 export cable circuits
- Only wind farm in development on south coast



Onshore Elements:

- 38.8km onshore cable route underground for entire route
- 27 trenchless crossings reduce impact to roads, rail & rivers
- 1 new substation at Oakendene to enable connection into high voltage transmission grid network
- Grid connection into Bolney National Grid substation



Could power over 1million homes and reduce CO₂ emissions by around 1.8million tonnes each year



RWE leads the development on behalf of joint venture partners, a Macquarie-led consortium and a subsidiary of Enbridge Inc.

RWE

- in operation
- under construction
- in development

¹ Total installed capacity
² Owned renewables capacity as of March 2024. Pro rata capacity





Key milestones

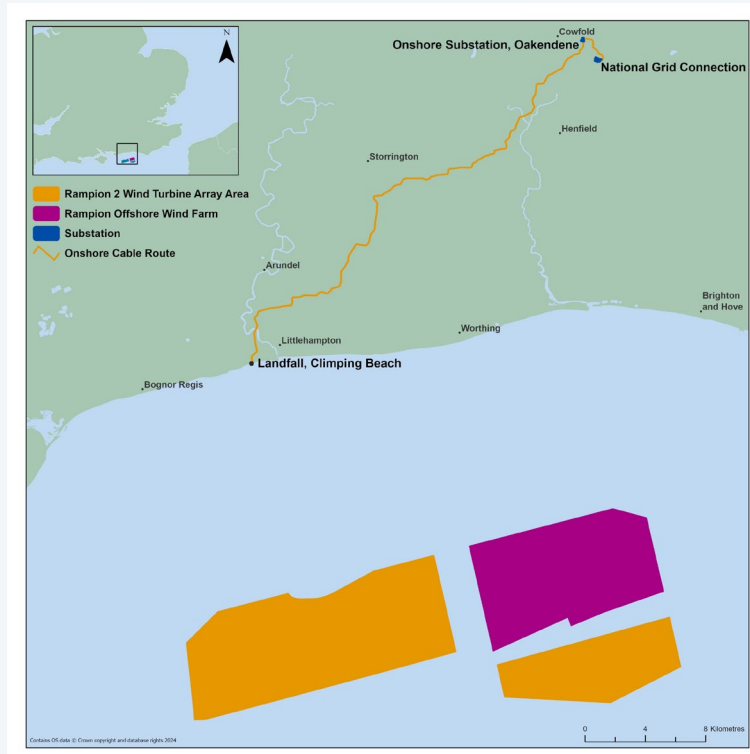
DCO Award!

**JR period closed
with no
applications**

**Refine
project
design**

**Engage
suppliers in
the market
place**

**Establish
delivery
timescales**





Next steps...

Major offshore tender opportunities

Tier 1 suppliers: WTGs, foundations, cables, offshore substation

Site preparation & management: UXO clearance, boulder clearance, scout vessels, guard vessels

Construction Project Management (CPM) Base:

welfare facilities, modular buildings, security, port services, logistics

Installation: jack-up vessels, cranes, ROVs, barges, support vessels, crew transfers

Electrical infrastructure: offshore substation design, supply, assembly and commissioning

Next steps...

Major onshore tender opportunities

Tier 1 supply: Onshore substation supply, assembly & construction, cable circuits, cable route construction

Site preparation: access arrangements, fencing, gates, trackway, welfare facilities

Plant and machinery: civil engineering, transportation, construction vehicles for topsoil and subsoil strip, trench & backfill, duct laying

Electrical: transition joint bays, jointing operations



Next steps...

O&M Base tender opportunities

Operations & Maintenance Base:

Design, materials & construction, fixtures & fittings, warehouse & storage, parking & landscaping

Offshore transit to site:

Floating pontoons, PPE and safety equipment, crew transfer vessels, cranes and lifting gear

If you're in the marketplace, engage with us via the STEP (Supplier Transfer Engagement Programme)



We look forward to engaging with you



- May 1st 2024:
Supplier Engagement Event,
Worthing
- Well over 100 suppliers
largely from the southeast
- More supplier events to
come in 2026
- Thanks for listening

Q & A



Rampion 2
WIND FARM

Q & A