



Norfolk Offshore Wind Projects

Norfolk Vanguard West 1.4GW

Norfolk Vanguard East 1.4GW

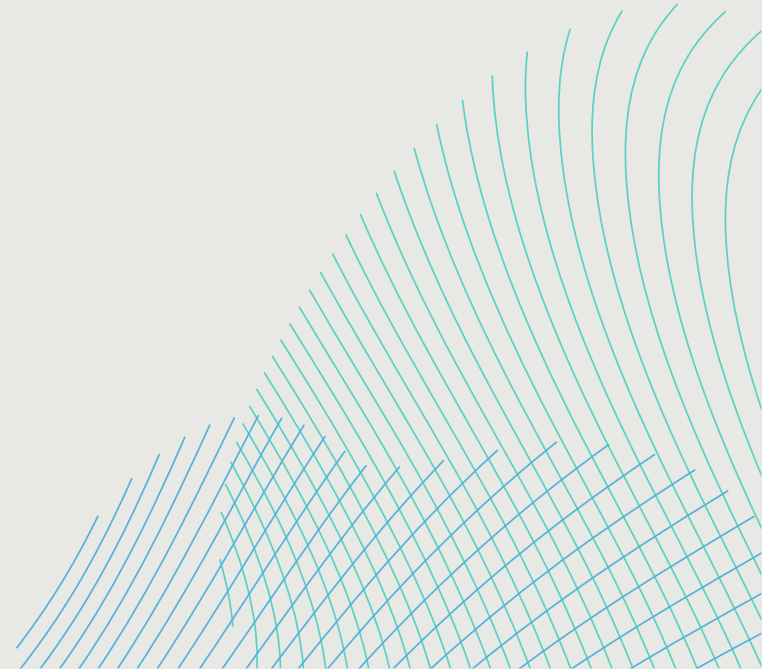
Norfolk Boreas 1.4GW

Andrew Hardcastle – EPC Director

Richard Beck – Senior O&M Package Manager

Agenda

- 1) RWE Overview
- 2) Norfolk Projects Overview
- 3) Reflection
- 4) Look Ahead
- 5) Be involved

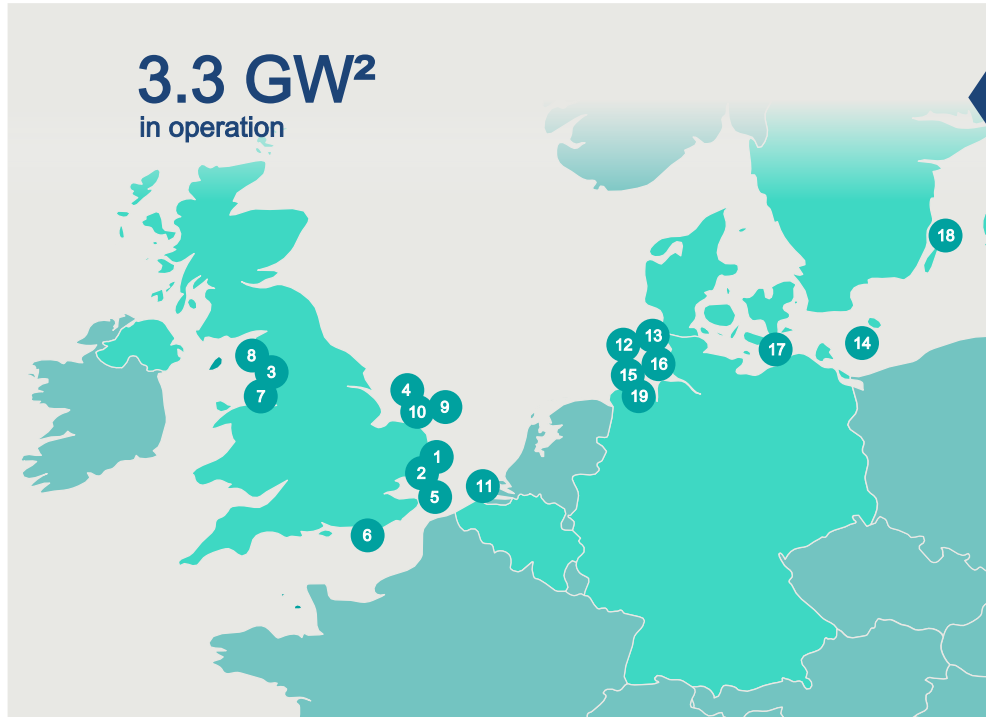


RWE

RWE Offshore Wind



RWE Offshore Assets In Operation:



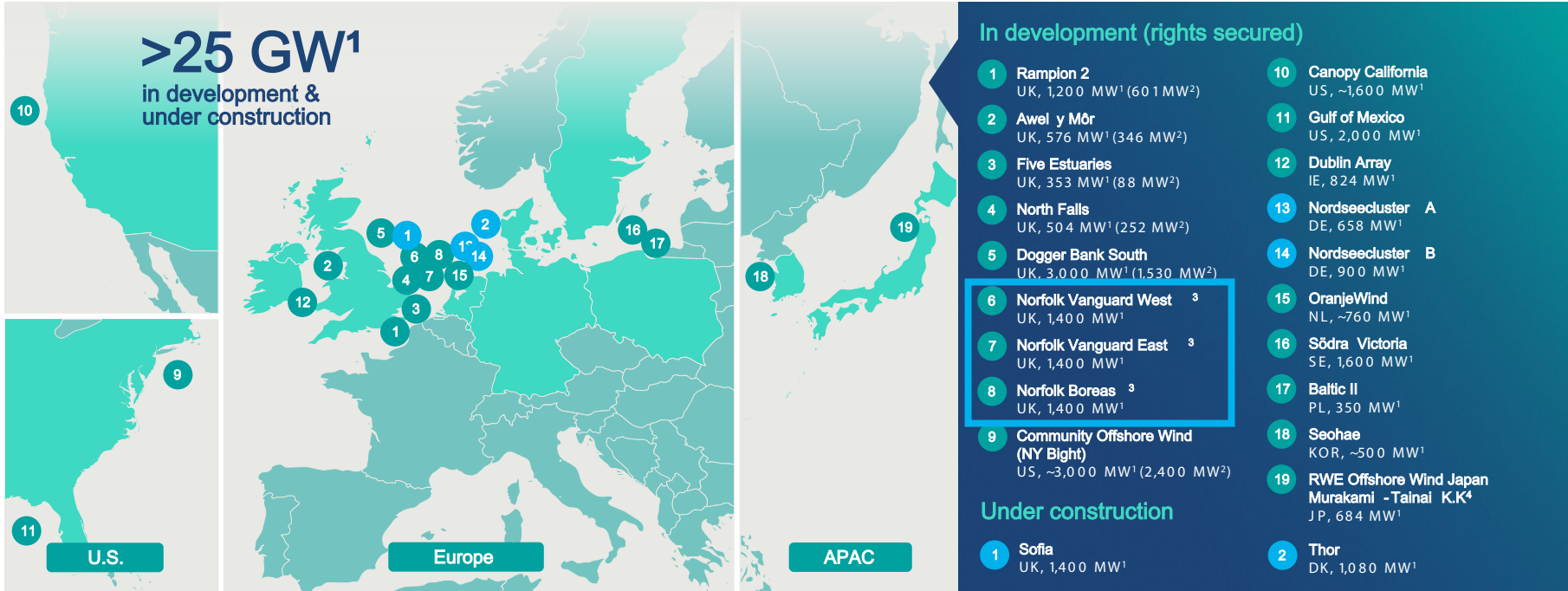
In operation

- 1 Galloper**
UK, 353 MW¹ (88 MW²)
- 2 Greater Gabbard**
UK, 504 MW¹ (252 MW²)
- 3 Gwynt y Môr**
UK, 576 MW¹ (288 MW²)
- 4 Humber**
UK, 219 MW¹ (112 MW²)
- 5 London Array**
UK, 630 MW¹ (189 MW²)
- 6 Rampion**
UK, 400 MW¹ (200 MW²)
- 7 Rhyl Flats**
UK, 90 MW¹ (45 MW²)
- 8 Robin Rigg**
UK, 174 MW¹
- 9 Scroby Sands**
UK, 60 MW¹
- 10 Triton Knoll**
UK, 857 MW¹ (506 MW²)
- 11 Thornton Bank**
BE, 325 MW¹ (87 MW²)
- 12 Alpha Ventus**
DE, 60 MW¹ (16 MW²)
- 13 Amrumbank West**
DE, 302 MW¹
- 14 Arkona**
DE, 385 MW¹ (193 MW²)
- 15 Nordsee One**
DE, 332 MW¹ (50 MW²)
- 16 Nordsee Ost**
DE, 295 MW¹
- 17 Rødsand 2**
DK, 207 MW¹ (41 MW²)
- 18 Kårehamn**
SE, 48 MW¹
- 19 Kaskasi**
DE, 342 MW^{1,2}

¹Total installed capacity | ² Net pro -rata capacity as of 03/23 | World map not set to size and proportion

Our Offshore Pipeline

In development (rights secured) & under construction:



¹Total capacity | ² Pro-rata capacity as of 11/23 | ³ Acquisition subject to completion in the course of Q1 2024 | ⁴ Consortium with Mitsui and Osaka Gas | World map not set to size and proportion

RWE

Norfolk Offshore Wind Projects



Project Overview

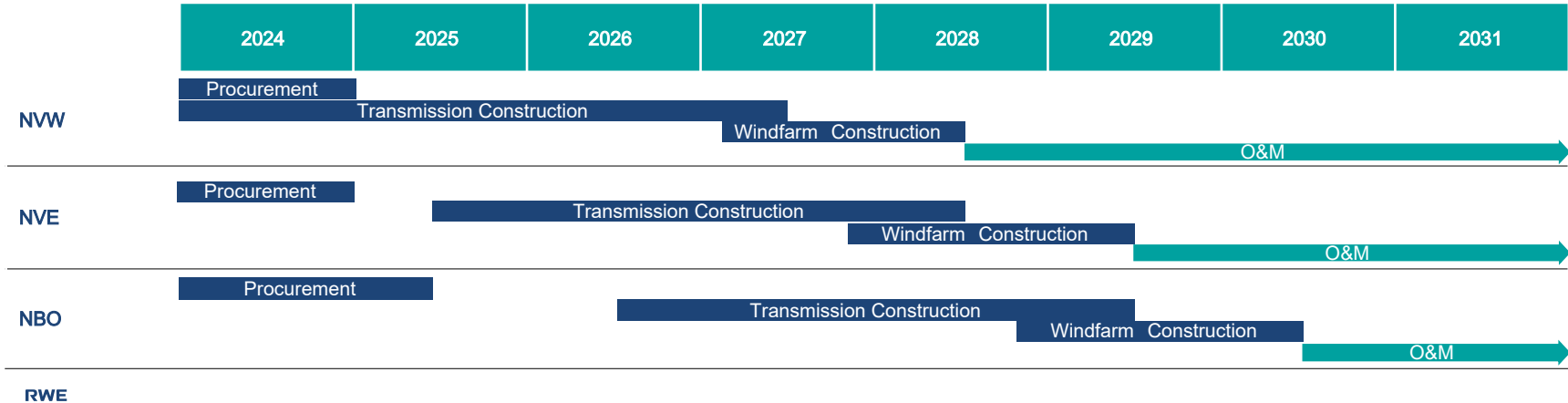
Legend

- Norfolk Boreas site boundary
- Norfolk Vanguard West site boundary
- Norfolk Vanguard East site boundary
- Proposed offshore electrical cable for Norfolk Vanguard West, Norfolk Vanguard East, and Norfolk Boreas
- Proposed onshore electrical cable route for Norfolk Vanguard West, Norfolk Vanguard East, and Norfolk Boreas



Key Details and Timeline

Project Key Details	
Project Name	Norfolk Vanguard West (NVW) + Norfolk Vanguard East (NVE) + Norfolk Boreas (NBO)
Country	UK; 50 - 80 km off the East Anglia coast
Unique characteristics	HVDC Transmission system Co-located onshore/offshore cable routes and grid connection Holistically developed projects with procurement, construction and O&M synergies
Capacity	1.4 GW installed capacity per site 4.2 GW total – 3.9million homes equivalent

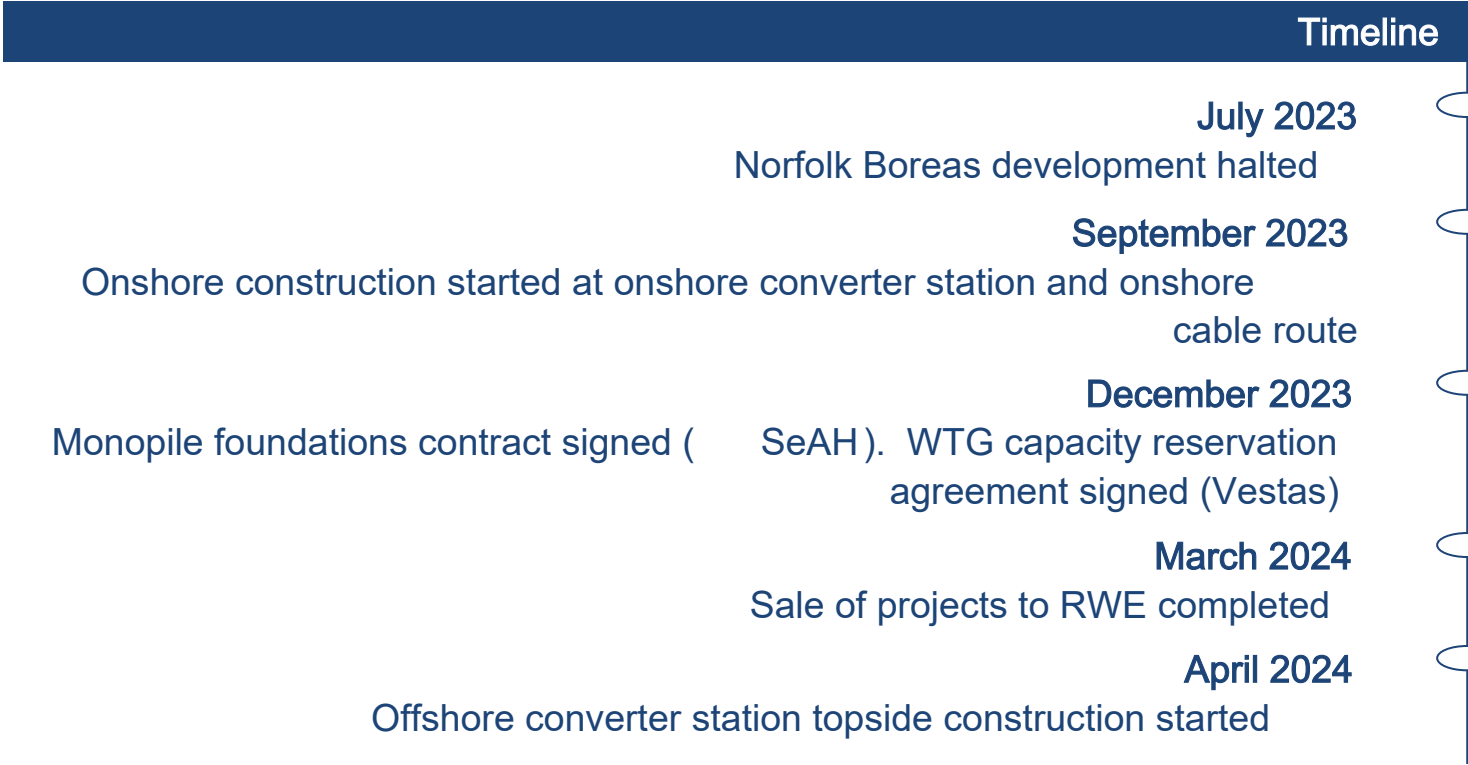


RWE

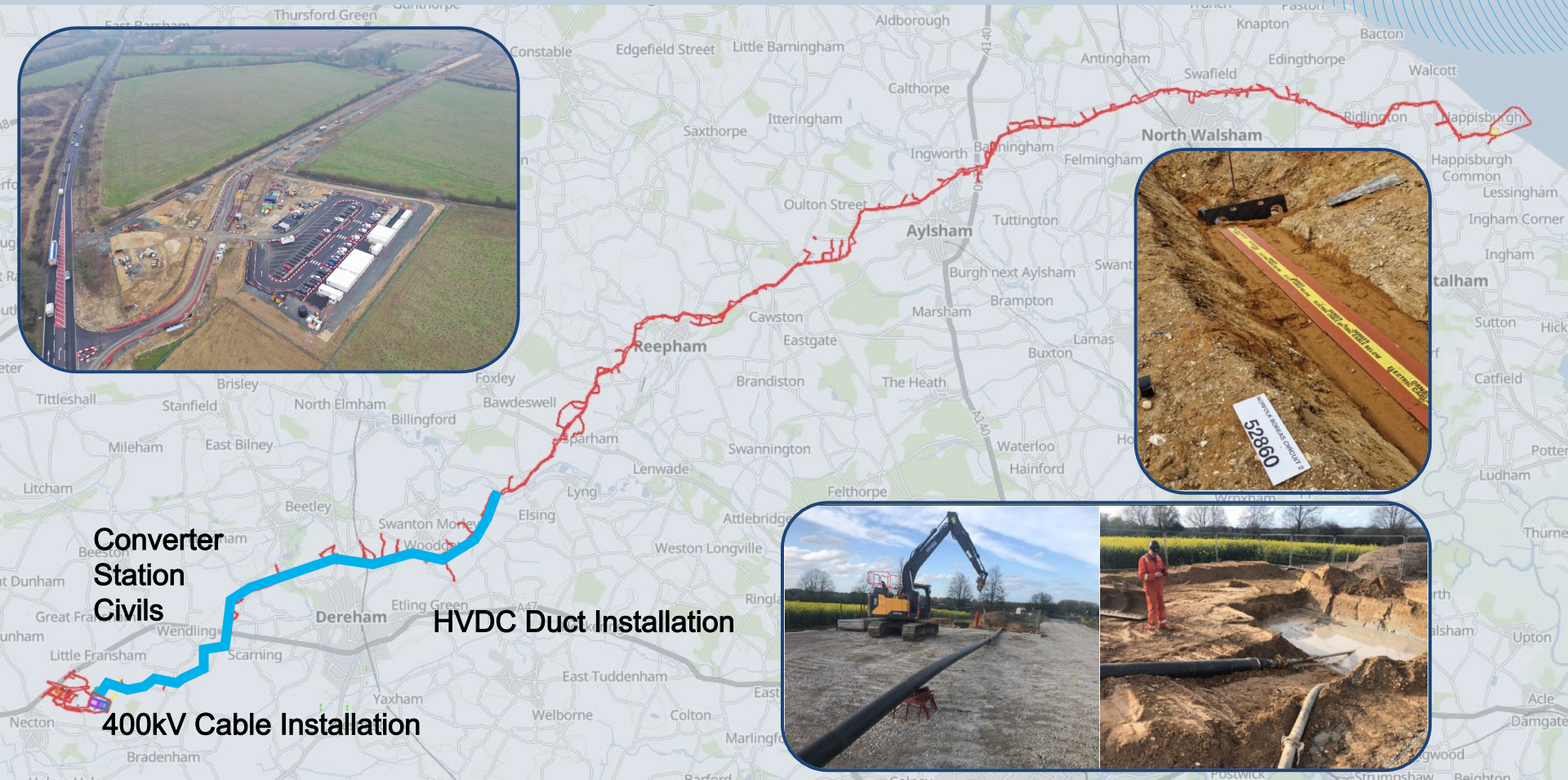
Reflection



Past 12 months



Onshore Construction Progress



Norfolk Projects: O&M Base Gt Yarmouth

- Owned by Great Yarmouth Borough Council, Operated by Peel Ports
- Competitive Tender carried out 2022 - 2023. Selected in April 2023 and Reservation Agreement in place
- Brownfield site with enabling works underway
- Adequate space for warehouse, offices and quayside
- Proven history in O&G and Offshore Wind
- Close proximity to Windfarm
- Future proof:
 - Opportunities for growth
 - Versatility of River berths and Outer Harbour
 - Options for heli-ops locally if deemed beneficial
- Collaboration with GYBC and Peel Ports
- Prospects for Employment

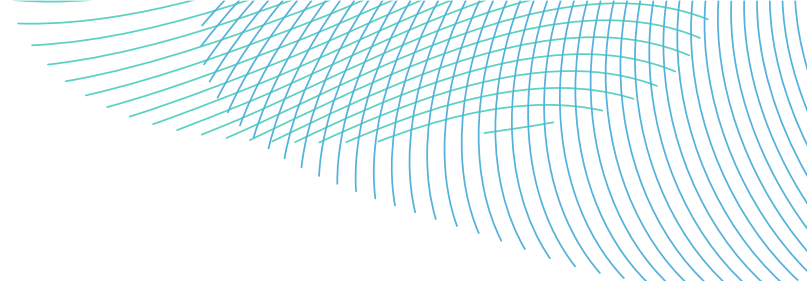


Artist's impression

RWE

Look Ahead





Next 12 months

- Complete procurement of outstanding contracts for Norfolk Vanguard West and Norfolk Vanguard East
- Continue combined onshore construction works
- Start Norfolk Vanguard West onshore export cable manufacturing
- Start Norfolk Vanguard East offshore converter station manufacturing
- Restart Norfolk Boreas procurement and development

RWE

Be Involved



Engage



STEP Programme: Supplier Engagement Tool
[Supplier Transparency Engagement Programme \(STEP\) \(rwe.com\)](https://www.rwe.com)



Career Opportunities: Multiple ways to join the team, for more information on live vacancies, apprenticeships, undergraduates, Internships and work placements [Our future is in your hands | RWE Careers](#)



Meet The Buyer: 1-2-1 sessions with RWE and Tier 1 suppliers



Keep In Touch: Prebook online sessions to meet with members of the team



norfolk@rwe.com