

OWEKH

Offshore Wind Evidence + Knowledge Hub

Accelerating the EIA process – The OWEKH approach

Jon Rees on secondment to TCE from Cefas

EEEGR – MST Conference Norwich Football Club – 17th April 2024

THE CROWN
ESTATE

Offshore
Wind Evidence
+ Change
Programme

AtkinsRéalis

IEMA

Department
for Environment
Food & Rural Affairs

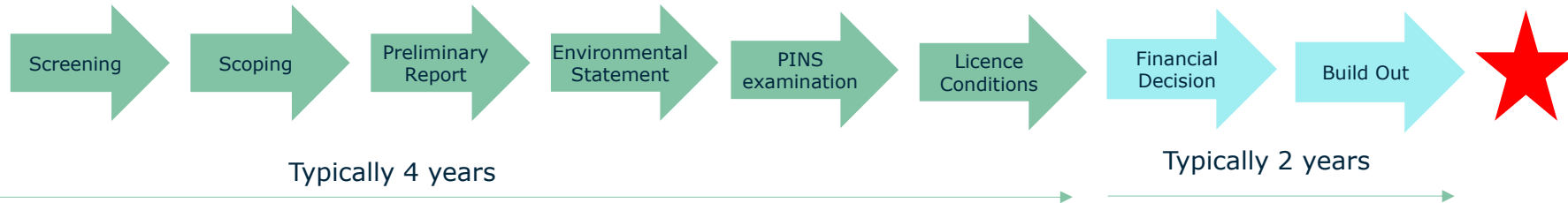
OffshoreWind
IndustryCouncil

1

What is the issue?



Simplified EIA Process



A number of initiatives across Gov/industry

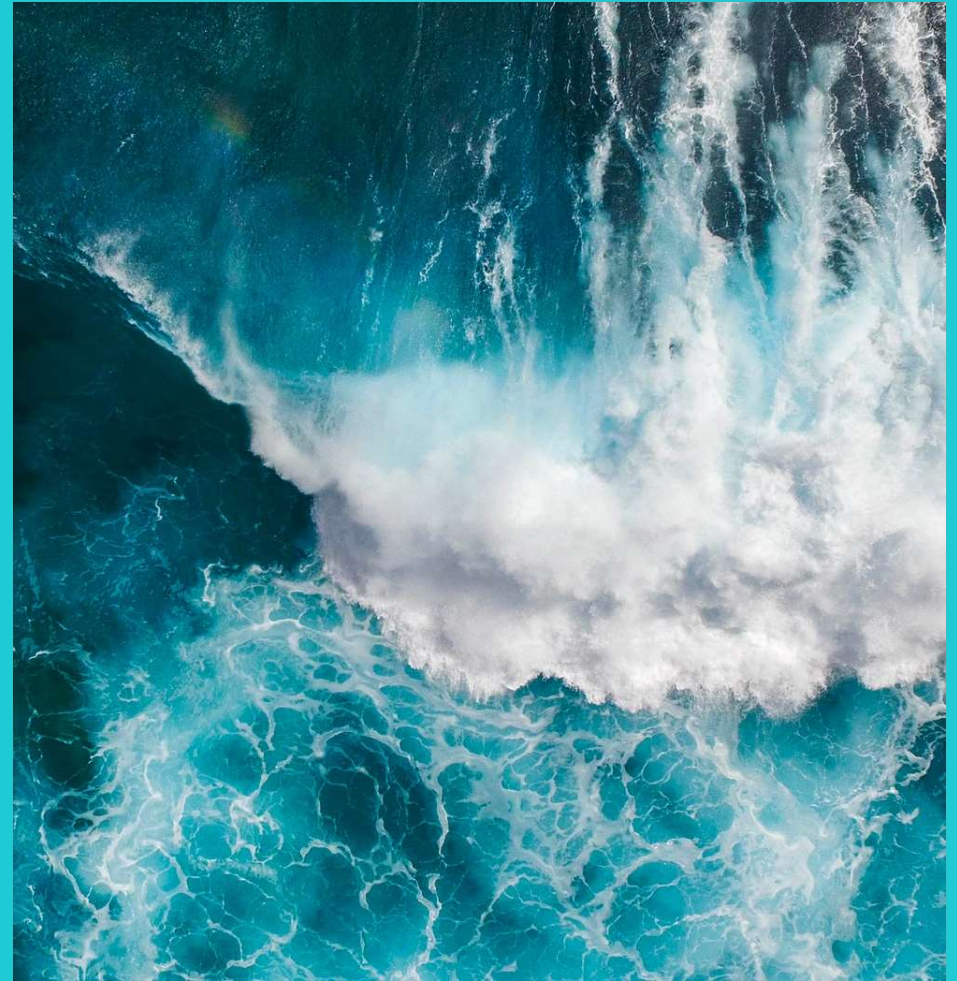
- ✓ Pre Consent surveys e.g. Round 5 in Celtic – birds, met ocean etc (TCE)
- ✓ OW Evidence and change programme (OWEC) – TCE invested over £50m
- ✓ Pathway to Growth (P2G) – OW Industry Council (OWIC)
- ✓ Outcomes ; Project Speed; MSpri (Defra)
- ✓ OW Environmental Standards (OWES) part of OW Environmental Improvement Package (OWEIP) - Defra
- ✓ State of the Nation (MMO)
- ✓ R&D on high risk issues E.g. UXO/deflagration (Defra+TCE); ECOWIND & ECOFLOW (UKRI +TCE), ScotMER
- ✓ **Offshore Wind Evidence and Knowledge Hub (OWEKH) - TCE**

OWEKH

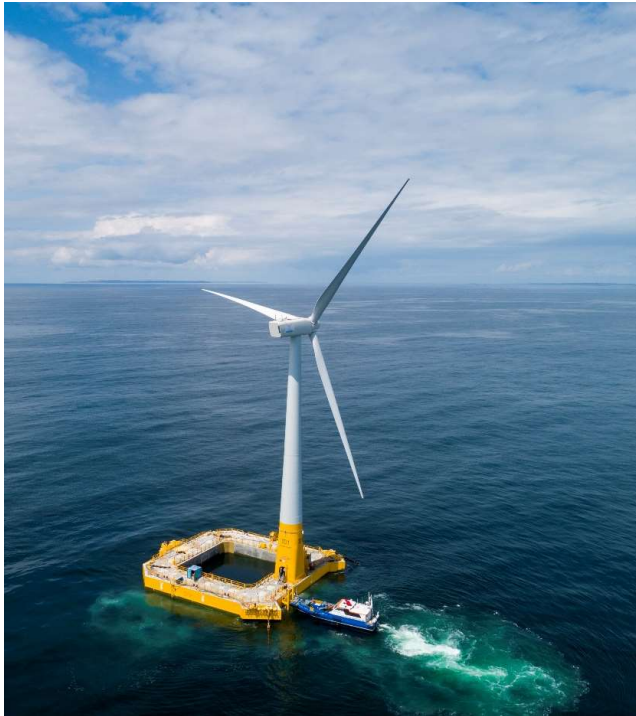
Offshore Wind Evidence + Knowledge Hub

2

OWEKH Vision



What is OWEKH?



The mission of OWEKH is to support the consenting process for offshore wind projects by providing a sector-wide online portal supporting a single point of access to data and information including the **latest guidance and best practice documents**.

The portal and the governance associated with it will collectively connect stakeholders across the industry and facilitate the assimilation of data and information into knowledge tools (**guidance or statements of understanding**).




This coordinated approach will support impact assessments and consenting decisions by providing consistent and clear direction to **support rapid high-quality consenting**.

Our goal is to support sustained and accelerated **sustainable growth** in generation of offshore wind energy.

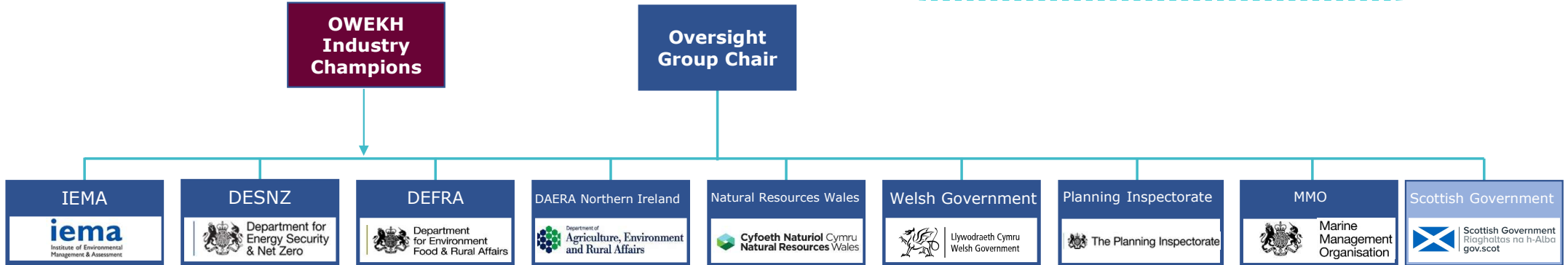
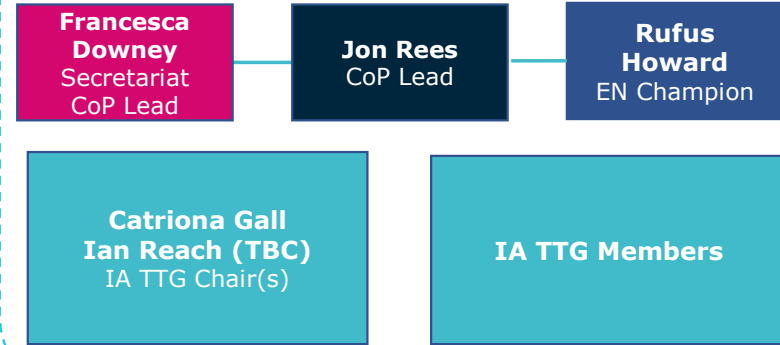
OWEKH

Offshore Wind Evidence + Knowledge Hub

Who is involved?

-  The Crown Estate
-  AtkinsRéalis
-  Industry Champions (Greg Tomlinson (Total) & Juliet Shrimpton (RUK))
-  IA TTG
-  Oversight Group
-  Oversight Group (Pending)

Impact Assessment Technical Topic Group (TTG)

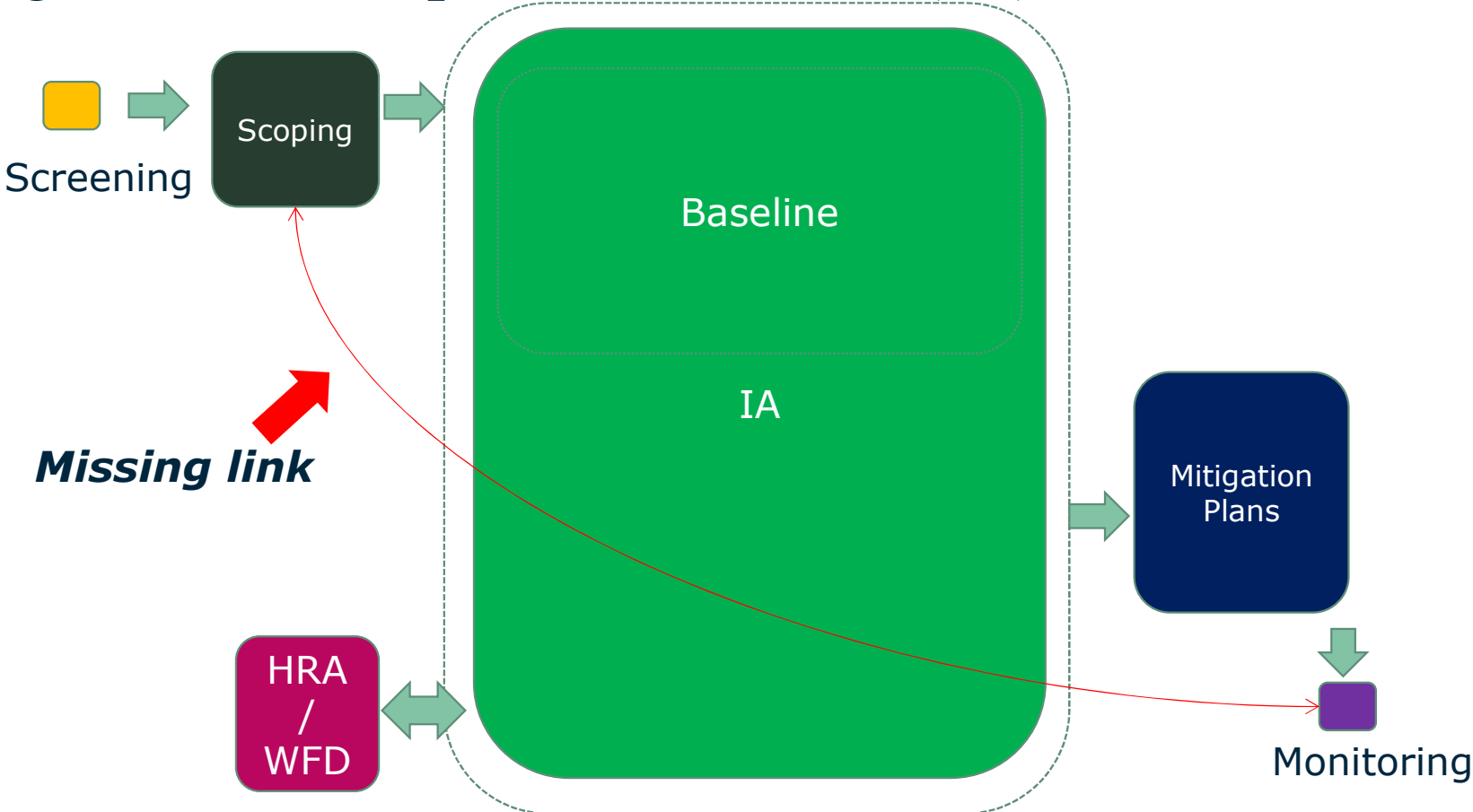


Advisory

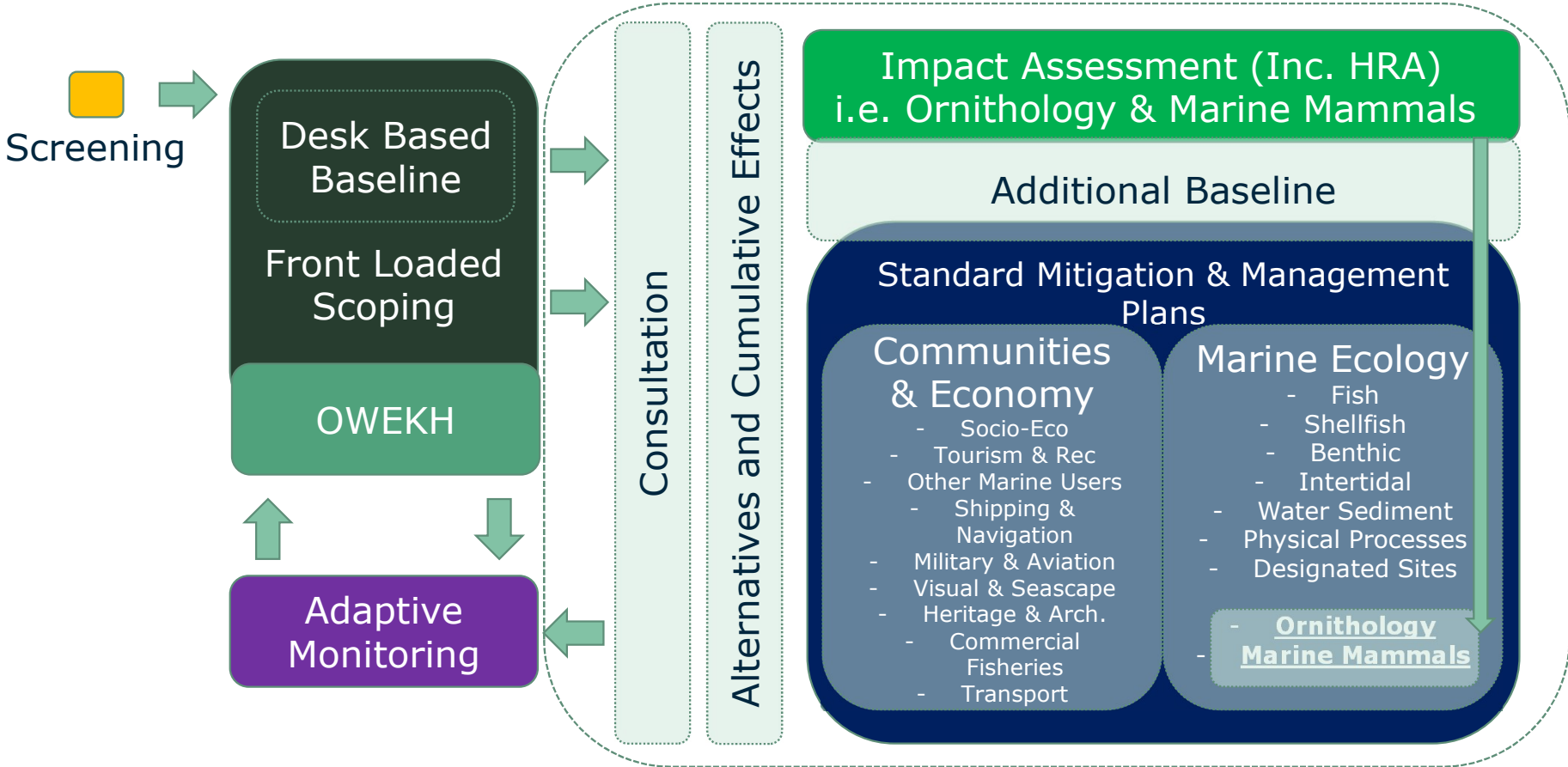
OWEKH

Offshore Wind Evidence + Knowledge Hub

Existing model of Impact Assessment (IA)



Future of Offshore Wind Assessment?



3

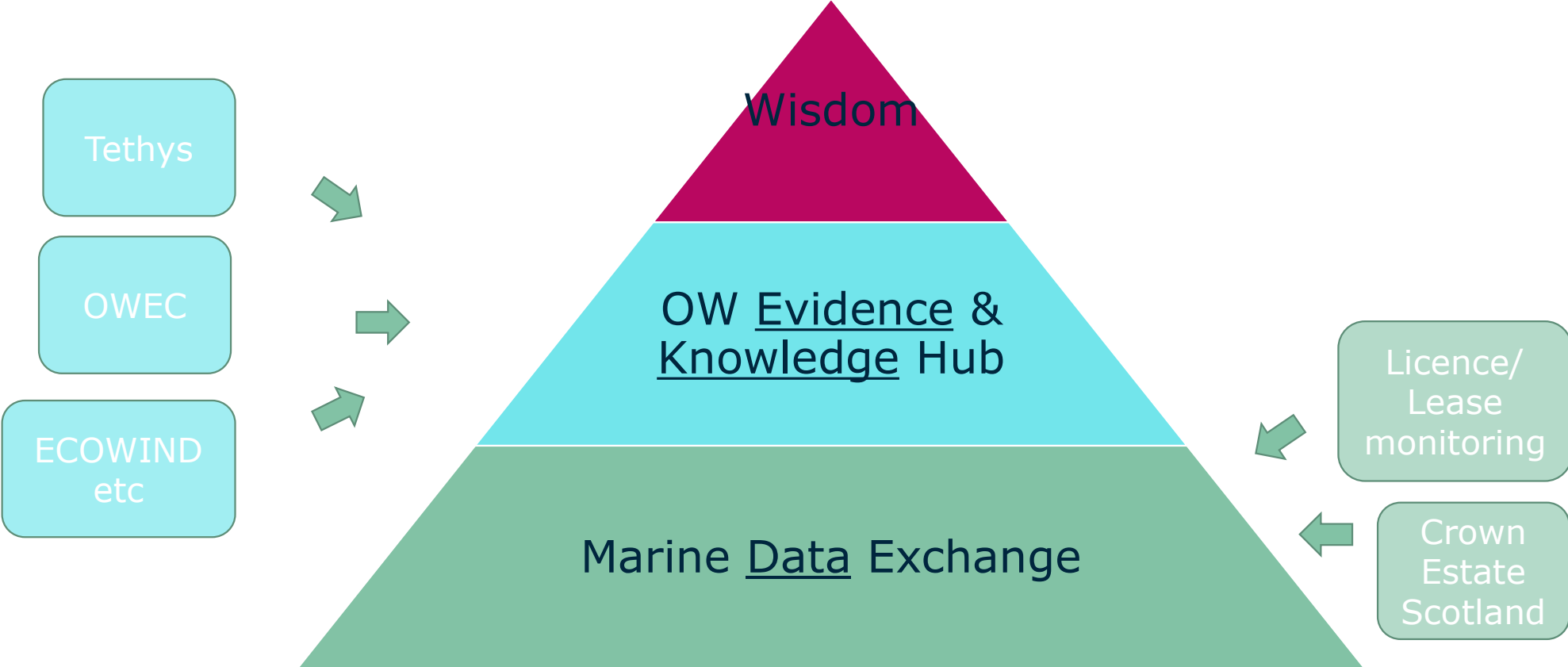
Digital Landscape



OWEKH

Offshore Wind Evidence + Knowledge Hub

TCE – Digital Landscape



OWEKH website – OWEKH.COM

OWEKH

Home Topics Upload External Resources About Search Sign Up Login

Welcome to the Offshore Wind Evidence and Knowledge Hub

Supporting offshore wind consenting through industry expert collaboration and consensus.

Search by topic, tag or keyword Filter Search

Tags

Explore OWEKH

Our mission is to support the consenting process for offshore wind projects by providing a sector-wide online portal... [Find out more ->](#)

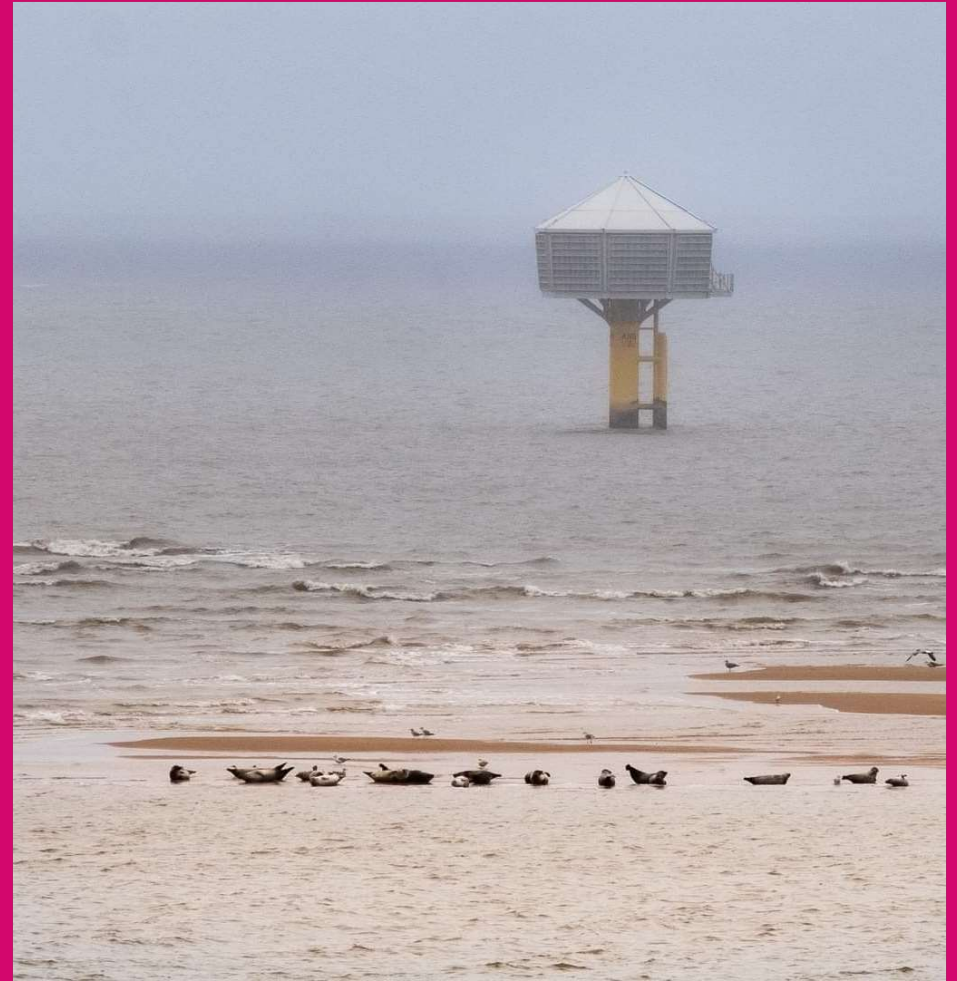
Pages you might be interested in

- Upload**
Click on this card to use our upload forms to add active research, surveys or other
- Search**
Looking to find data but don't know where to start? Head to our search page to use our
- Topics**
If you're looking for guidance on a specific topic, then click on this card to see the active Technical
- FAQs**
Do you have a question you can't find the answer to or want to know something about
- Terms of Use**
Interested in understanding how OWEKH uses your information or what our common policy
- Tags**
Find out more about the tags we use to categorise information in OWEKH and how our tags map

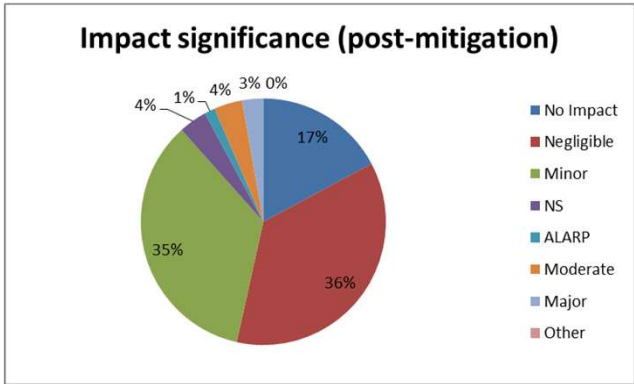
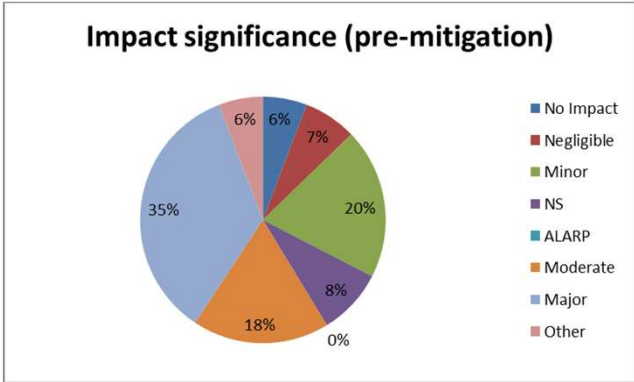
OWEKH is Live

4

Which “Chapters”?



Significant impacts pre/post mitigation



OWEKH – Evidence Notes

Evidence (akin to PINS Evidence Notes) aims to Summarise the current best available knowledge

Typical sections will include

- ✓ Issues that have been agreed (from Statements of Common Ground)
- ✓ Issues that have not been resolved (Link to OWEER)
- ✓ Standard Written Schemes of Investigation (including links between chapter e.g. Heritage and Benthic ecology)
- ✓ Standard Mitigation options
- ✓ Standard Monitoring conditions (but keeping aware of adaptive monitoring)

Evidence Notes will be Live documents

- ✓ Will have “sunset” clause to ensure regularly reviewed
- ✓ Direct method to uptake with latest research findings before being submit to OG etc
- ✓ Have a DOI to make them easily referenceable

OWEKH – Building momentum

Focus on the significant environmental topics (divide chapters into three priorities)

1. Identify topics of negligible concern
2. Identify topics with established standard mitigations that reliably reduce significant impacts
3. Identify topics with likelihood of significant adverse effects

OWEKH as the central hub for evidence notes, good practice and guidance

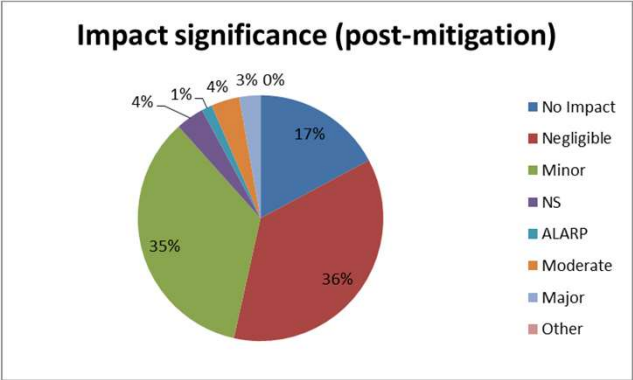
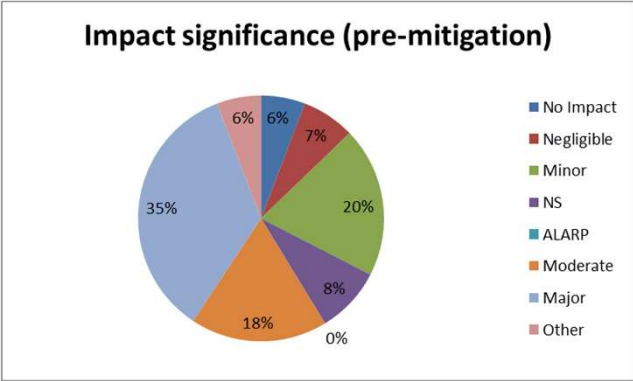
- ✓ EN will provide standardised and verified mitigation solutions
- ✓ EN will provide standardised templates for conditions
- ✓ EN will provide standardised monitoring for impacts during construction and operation

Provide evidence to support decisions that lead to a proportionate IA

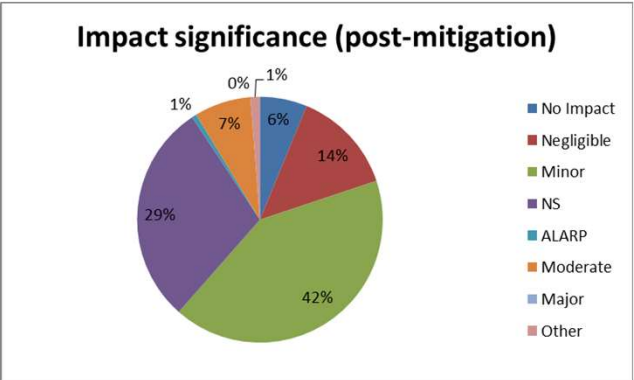
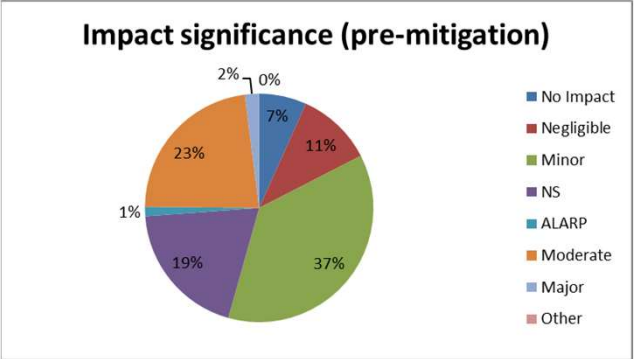
- ✓ Reduce costs and programme for developers, regulators and stakeholders
- ✓ Provide greater legal and scientific certainty for all stakeholders
- ✓ Establish knowledge gaps to direct further research (alongside OWEER)

First three EN proposals

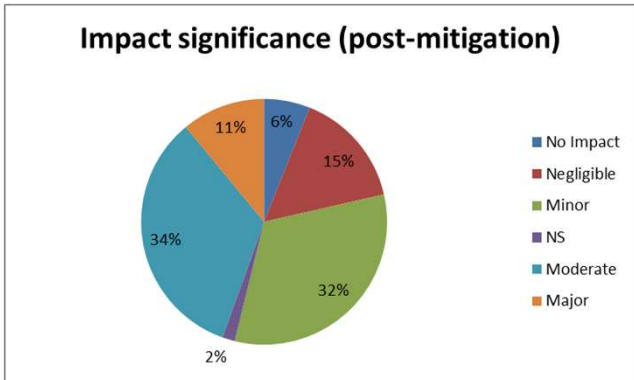
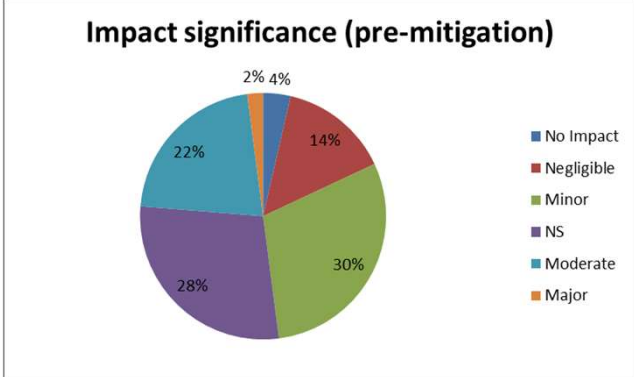
Marine Archaeology & Cultural Heritage



Shipping & Navigation



Seascape and Visual Impact Assessment



5

Next Steps



OWEKH

Offshore Wind Evidence + Knowledge Hub

OWEKH Summary

Accelerate the EIA process through the use of OWEKH Evidence notes

- ✓ Use Evidence notes to scope based on over 50 windfarms (IEP)
- ✓ Introduction of “scoping down” as a valid option
- ✓ Standard “written schemes of investigation”
- ✓ Use of standard mitigation options
- ✓ Use of adaptive management

Massive benefits to stakeholders

- ✓ Faster and focussed timelines for developers
- ✓ Emphasis on significant impacts for consultants
- ✓ NOT reducing environmental protection
- ✓ SNCB advice is “without prejudice”
- ✓ Cost effective review by SNCBs and regulators

Provide evidence

Move to a digital and more proportionate EIA
Avoiding defensive drafting of EIAs

OWEKH Summary

Thank you

Questions?

Email : Jon.Rees@thecrownestate.co.uk
Mobile: 07476 206724

P.s. Looking for volunteers to be on TTGs