

NORFOLK SEAWEED

Willie Athill

Norfolk Seaweed Ltd

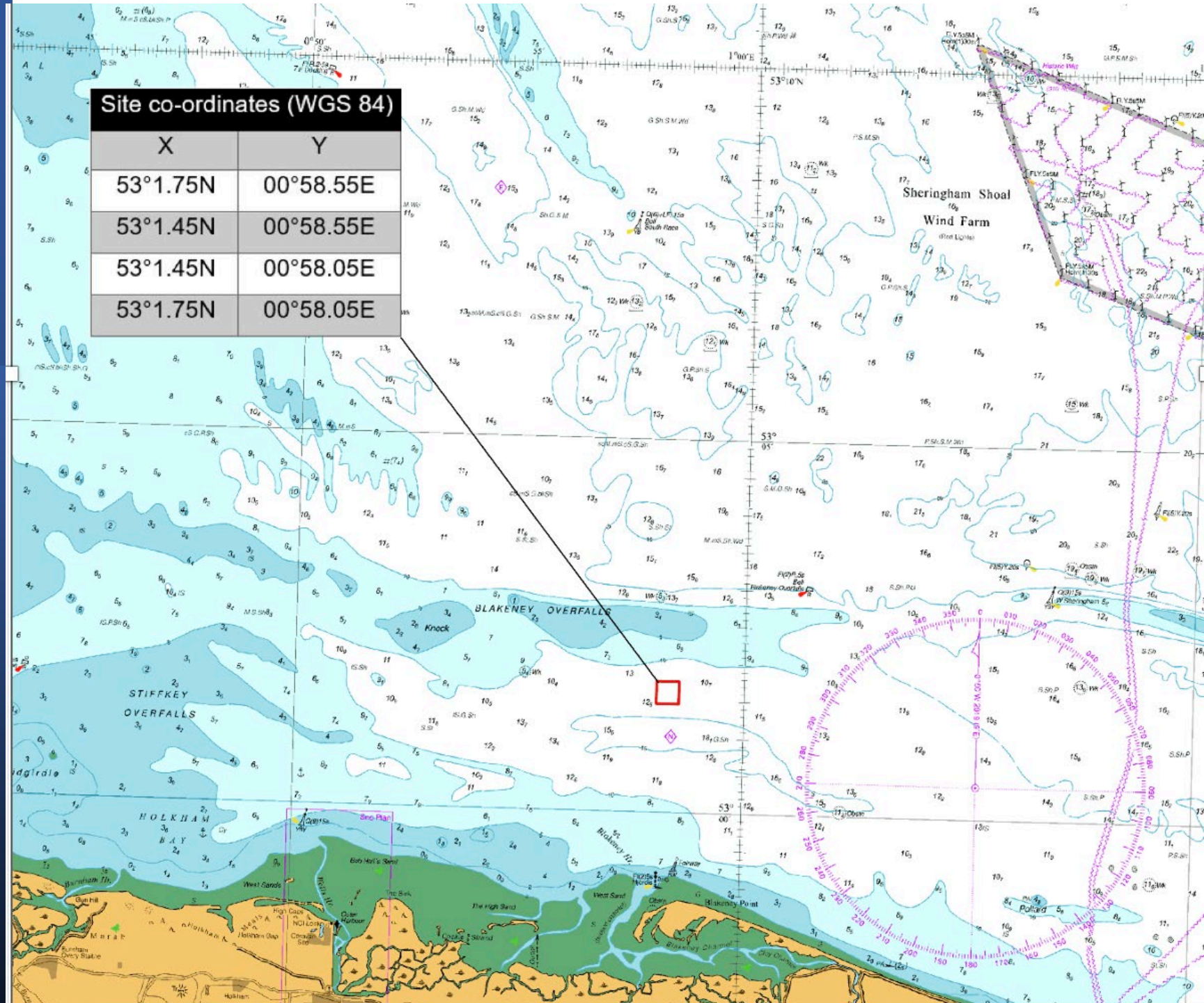
Marine Science and
Technology
Conference
17th April 2024

SUSTAINABLE AQUACULTURE: A NEW BLUE CARBON ECONOMY FOR NORFOLK



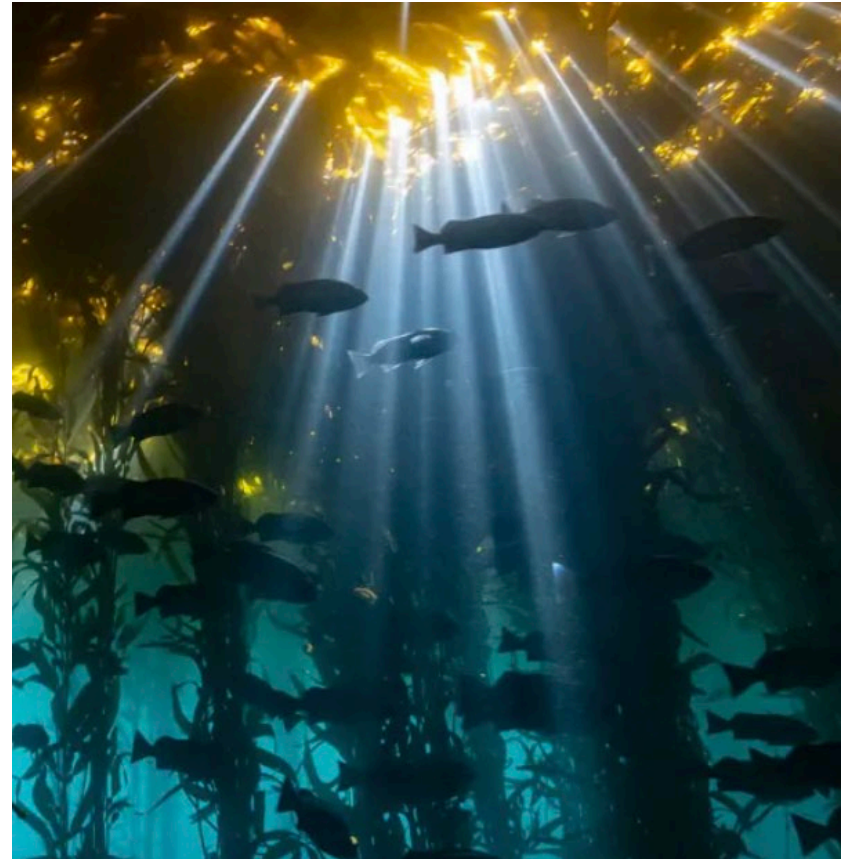
WHERE IS THE SEA FARM?

25Ha licence for the farm from the Marine Management Organisation and seabed lease from the Crown Estate



KEY ACTIVITIES

- **Cultivation:** Our seaweed and oyster cultivation processes will include seeding, nurturing, harvesting, and processing.
- **Research & Development:** we will continuously invest in R&D to improve cultivation techniques, enhance product quality, and explore new applications for seaweed.
- Native **oyster reef** regeneration
- Enhancing **marine biodiversity net gain**
- Global **demand for seaweed is on the rise** due to its versatile applications in food, pharmaceuticals, nutraceuticals, and biofuels and more...



Integrated Multi-Trophic Aquaculture model

How do Shellfish and Seaweed Farms provide Habitat Benefits?

Shellfish and seaweed farms provide habitat for wildlife in three main ways.

FORAGE:

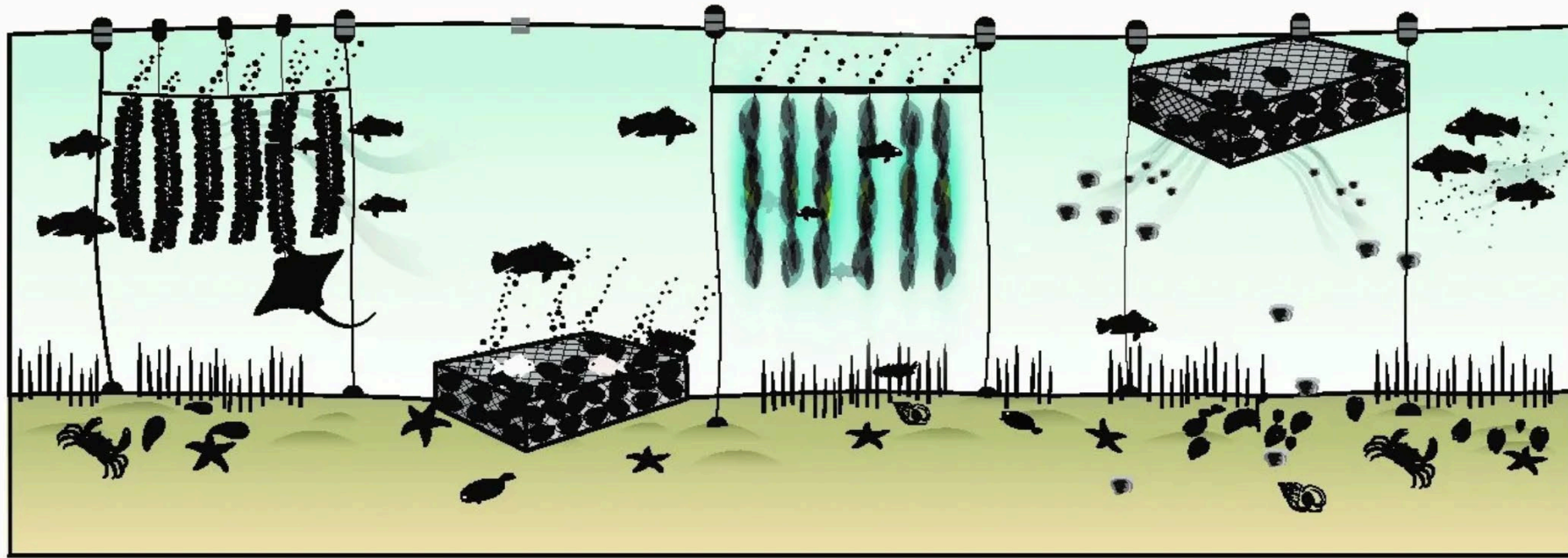
Predators prey on aquaculture species and the species that live around gear.

REFUGE:

Aquaculture farms create complex 3-dimensional living structure for invertebrates and fish to live.

REPRODUCTION:

Aquacultured bivalve and seaweed species breed and help rebuild wild populations. Wild species utilize aquaculture gear as spawning habitat.





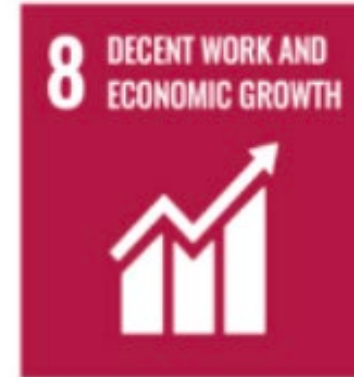
NS Ltd have commercial growing licences for native oysters (*ostrea edulis*) and pacific rock oysters (*crassostrea gigas*)

THREE STRANDS

- Commercial Oyster farm
- Native Oyster reef regeneration project
- Ecosystem services

Oyster Reef Regeneration & SDGs

- In 5-10 years, a 5 hectare project will contribute to:
- ---
- SGD 14 Life Below Water - 8 million oysters and an increased abundance of 375 million marine organisms, totaling 5000 tonnes across nearly 500 different species;
- SGD 6 Clean Water and Sanitation - by filtering 1.6 billion litres of water per day - equivalent to 640 olympic swimming pools;
- SGD 8 Decent Work and Economic Growth - by creating seasonal work and employment opportunities for fishermen and coastal communities;
- SGD 13 Climate Action - by managing 3.3 tonnes of nitrogen a year with an estimated 900 tonnes of carbon in shells, living biomass and additional nitrous oxide impact (not all verified pathways).



**CATALYST FARMING
BETTER TOGETHER**



Hethel Innovation



UEA

University of East Anglia

SCHOOL OF
ENVIRONMENTAL
SCIENCES

HOLKHAM

biotechnica



Norfolk
County Council



Oyster Heaven
SUSTAINABILITY REIMAGINED

ZSL
LET'S WORK
FOR WILDLIFE



www.norfolkseaweed.com