



# Working in Offshore Wind in the USA: Update from Virginia Beach





Welcome

Robert Bush

General Manager - EEEGR

# Housekeeping

There are no planned fire drills during this event. If you hear a fire alarm, please make your way to your nearest exit in a calm and orderly manner.



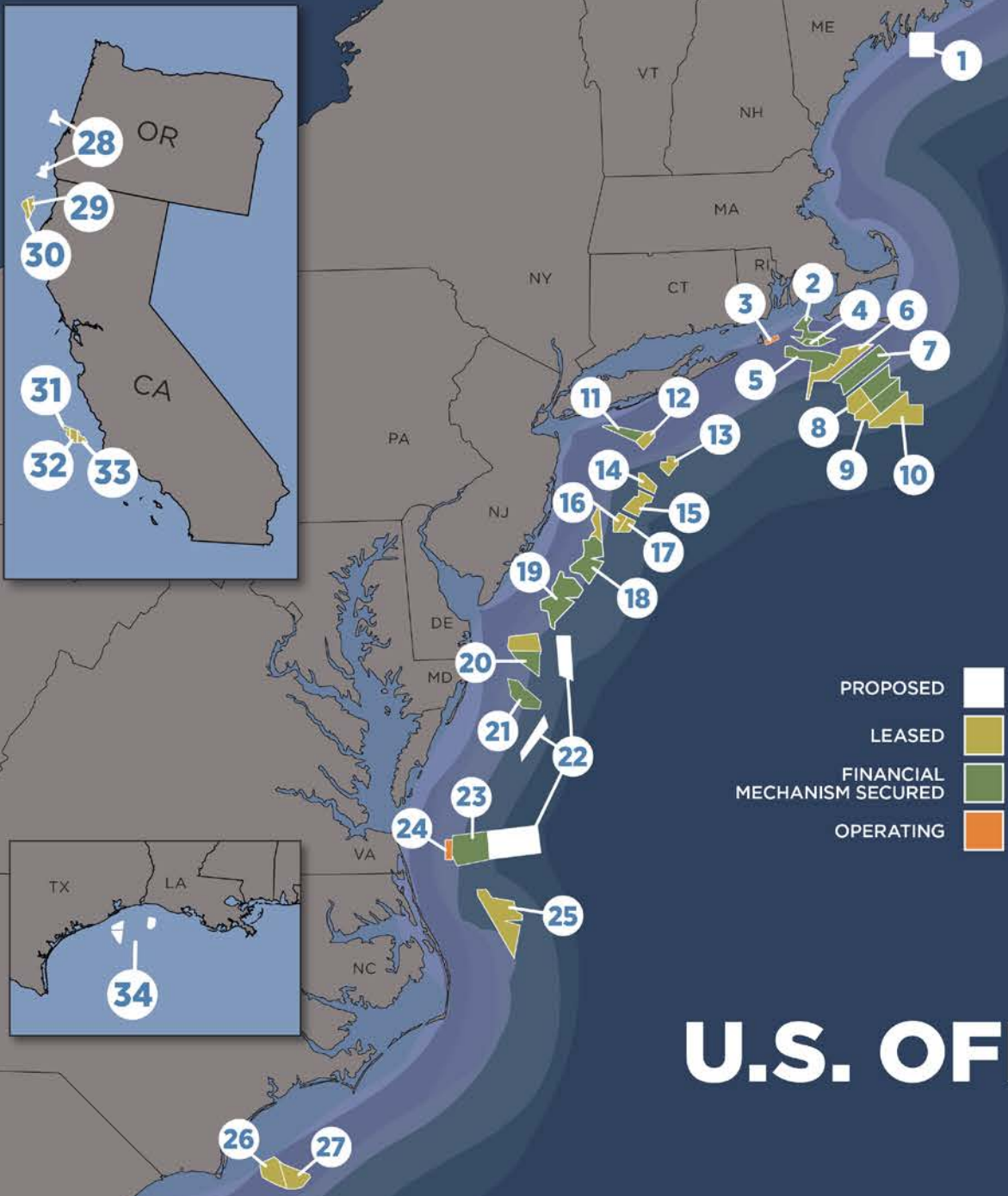
# City of Virginia Beach

*Offshore Wind Opportunities and Local Support*

Paige Fox

Virginia Beach Economic Development  
Business Development Manager



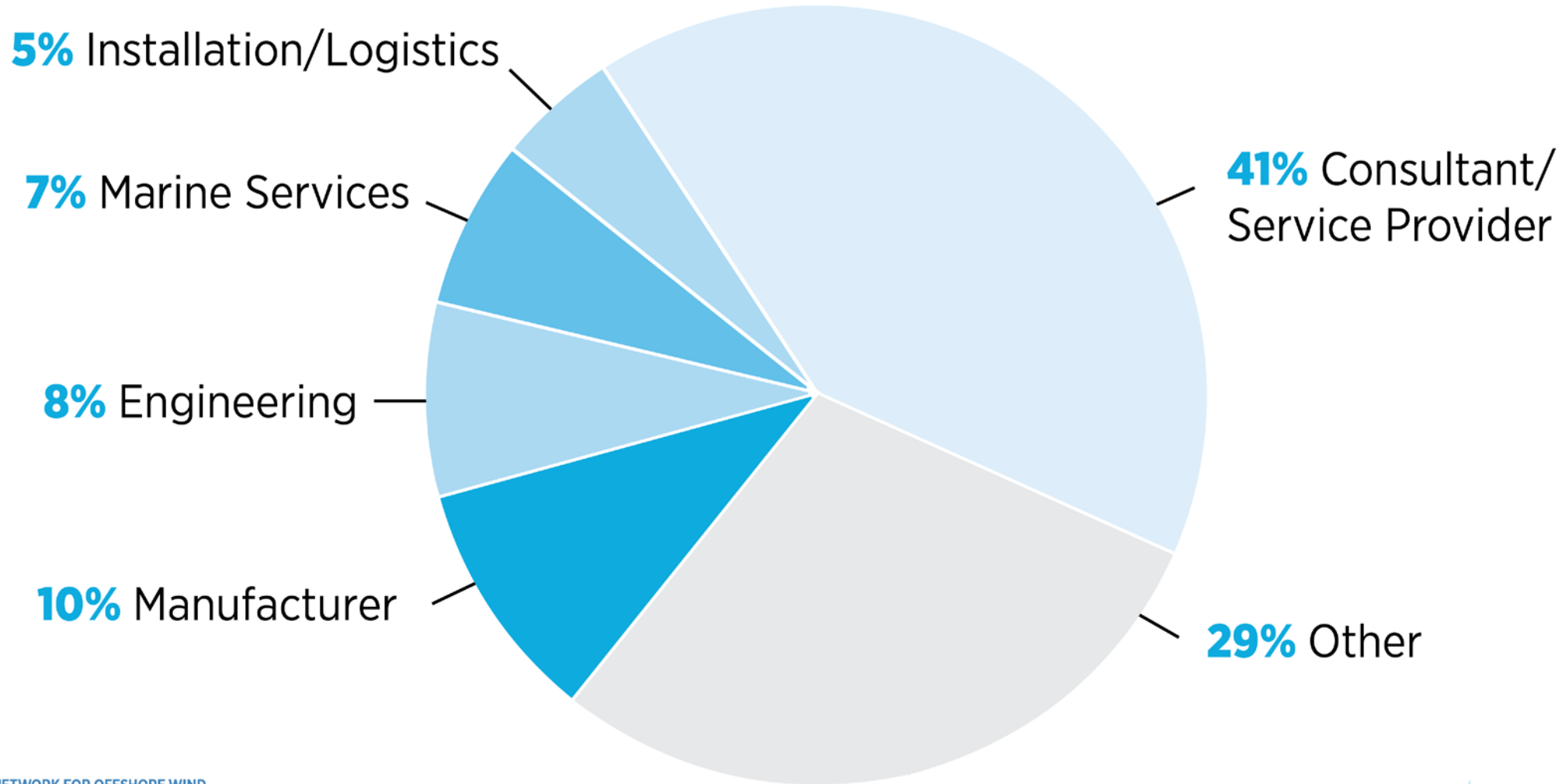


- 1** **Maine Aqua Ventus I**  
(New England Aqua Ventus) [11 MW]
- 2** **Revolution Wind**  
(Ørsted / Eversource) [704 MW]
- 3** **Block Island Wind Farm**  
(Ørsted) [30 MW]
- 4** **South Fork Wind Farm**  
(Ørsted / Eversource) [132 MW]
- 5** **Sunrise Wind**  
(Ørsted / Eversource) [880 MW]
- 6** **Bay State Wind**  
(Ørsted)
- 7** **Vineyard Wind / Park City W. / Commonwealth W.**  
(CIP / Avangrid) [800/804/1,232 MW]
- 8** **Beacon Wind**  
(Equinor / bp) [1,230 MW]
- 9** **Southcoast Wind**  
(Shell / Ocean Winds) [1,204 MW]
- 10** **Liberty Wind**  
(CIP)
- 11** **Empire Wind 1 & 2**  
(Equinor / bp) [816/1,260 MW]
- 12** **Excelsior Wind**  
(Vineyard Mid-Atlantic)
- 13** **Bluepoint Wind**  
(Ocean Winds / GIP)
- 14** **Attentive Energy One**  
(TotalEnergies Renewables)
- 15** **Community Offshore Wind**  
(RWE / National Grid)
- 16** **OCS-A 0541**  
(Atlantic Shores)
- 17** **Leading Light Wind**  
(Invenergy)
- 18** **Atlantic Shores Offshore Wind**  
(EDF / Shell) [1,510 MW]
- 19** **Ocean Wind 1 & 2**  
(Ørsted) [1,100/1,148 MW]
- 20** **Skipjack I / II Wind Farm**  
(Ørsted) [120/846 MW]
- 21** **MarWin / Momentum Wind**  
(US Wind) [270/808.5 MW]
- 22** **Central Atlantic WEAs**
- 23** **Coastal Virginia OSW - Commercial**  
(Dominion Energy) [2,640 MW]
- 24** **Coastal Virginia OSW - Pilot**  
(Dominion Energy) [12 MW]
- 25** **Kitty Hawk Offshore Wind**  
(Avangrid)
- 26** **OCS-A 0545**  
(TotalEnergies Renewables)
- 27** **OCS-A 0546**  
(Duke Energy Renewables Wind)
- 28** **Oregon WEAs**
- 29** **OCS-P 0561**  
(RWE)
- 30** **OCS-P 0562**  
(CIP)
- 31** **OCS-P 0563**  
(Equinor)
- 32** **Golden State Wind**  
(Ocean Winds / CPPIB)
- 33** **OCS-P 0565**  
(Invenergy)
- 34** **Gulf of Mexico WEAs**

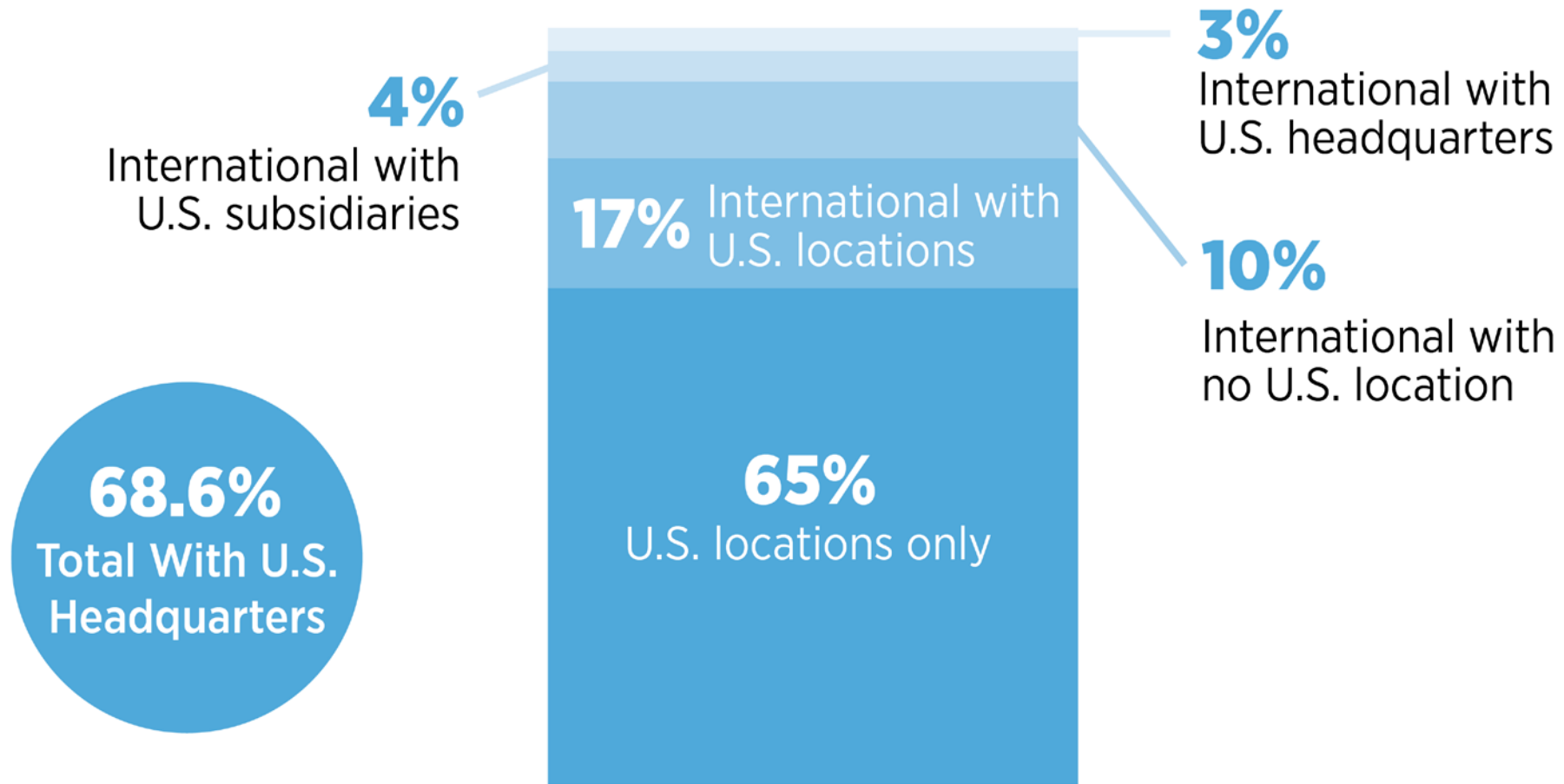
BUSINESS NETWORK FOR OFFSHORE WIND

# U.S. OFFSHORE WIND MARKET

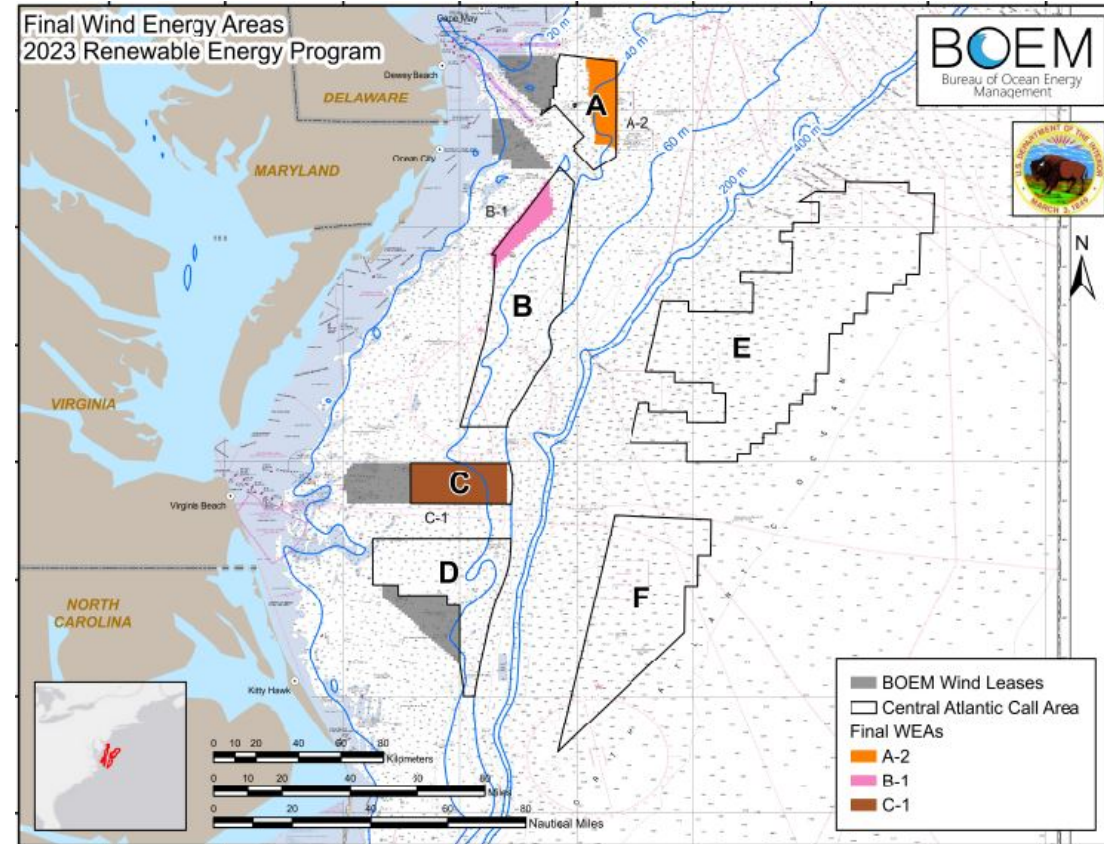
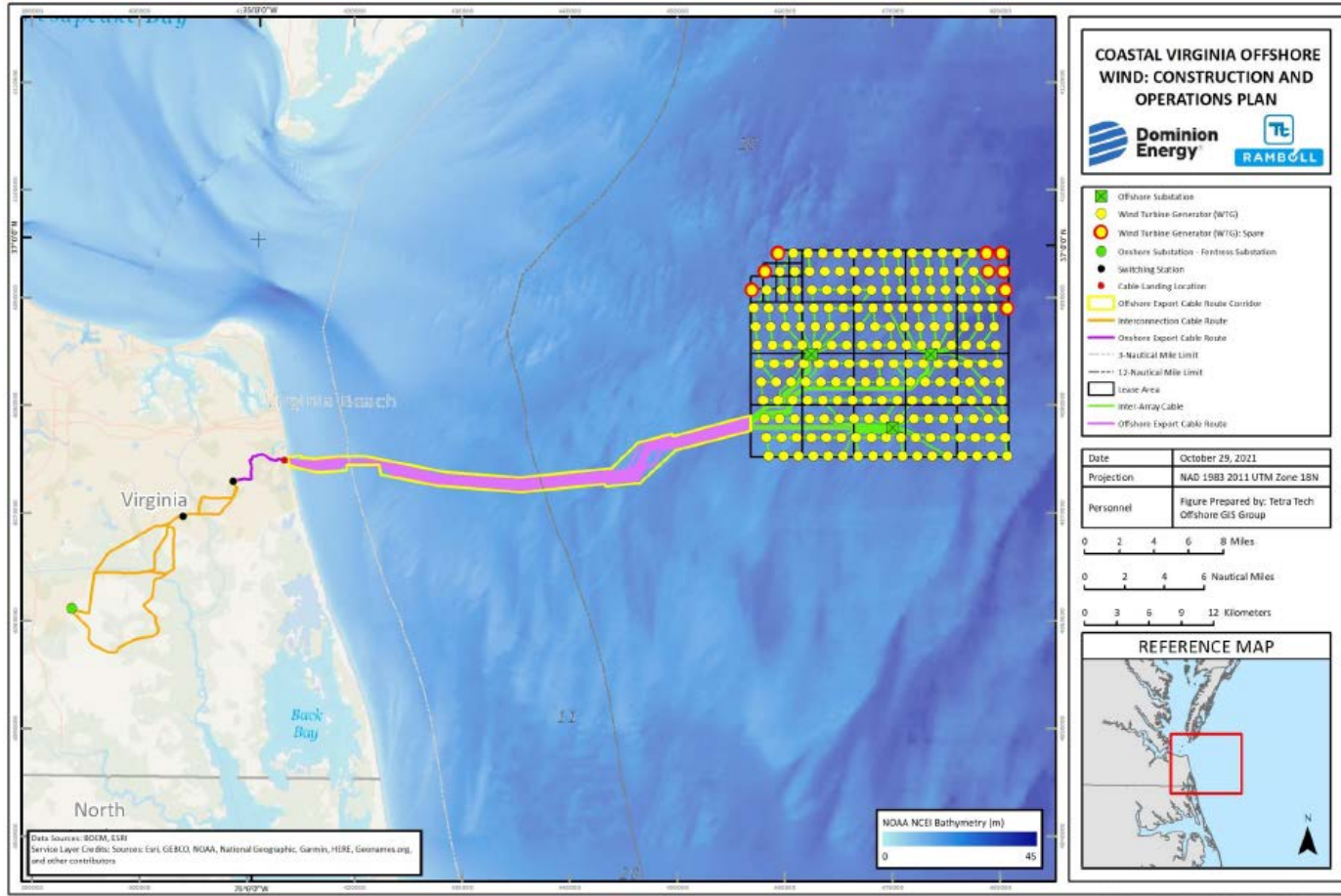
# Contracts by Sector



# Companies Awarded Contracts



# Mid-Atlantic Offshore Wind Hub

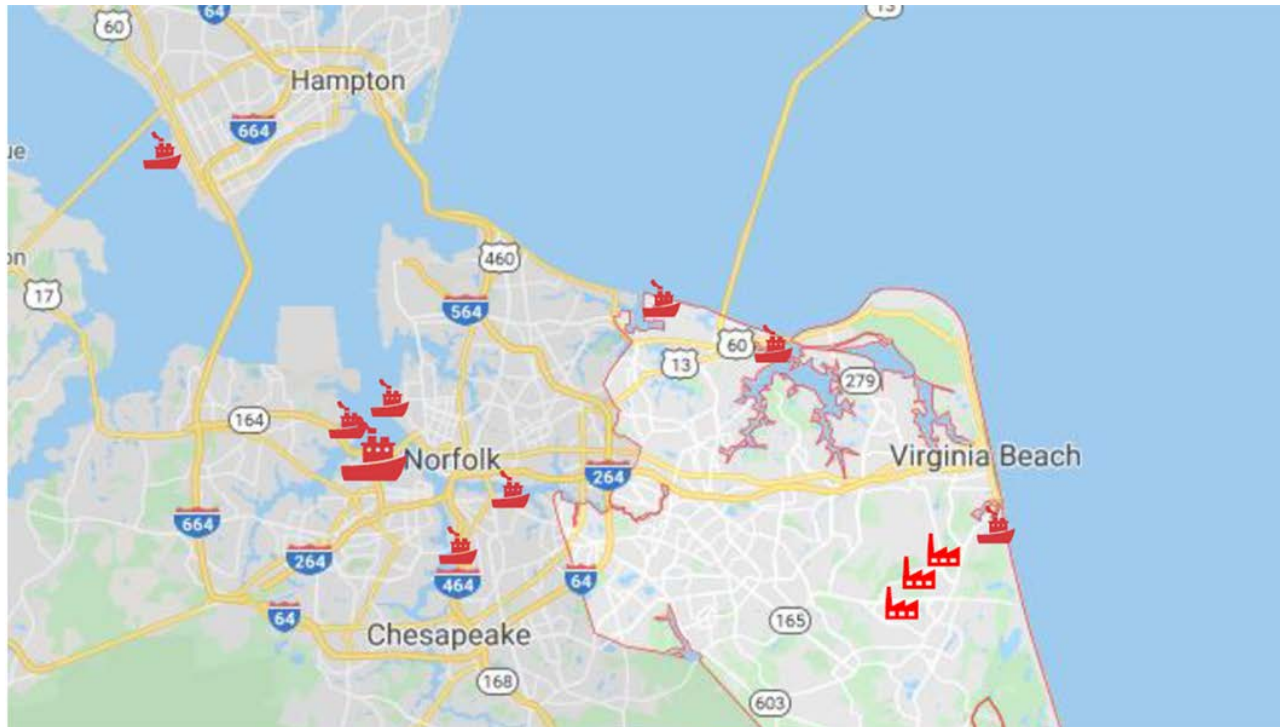


Dominion Energy Coastal Virginia Offshore Wind (CVOW)

BOEM's Central Atlantic Areas



# Strategic Location



Proximity to **Waterfront Industrial**



Proximity to **The Port of Virginia**

Availability of **Industrial Sites**

# Mid-Atlantic Success

**Stakeholder engagement** across multiple levels of Government

**Cost of Doing Business** is Competitive  
(Corporate Tax Rate has not increased since 1972)



**Right to Work State & Education Partnerships**

**14,000** active-duty military personnel annually exit the military in Hampton Roads –  
**V3 Program**

Skilled **Maritime** and **Manufacturing** industries supporting supply chain development

# Virginia Beach Economic Development

- Local EDO, working with the Regional EDO (Hampton Roads Alliance) and State EDO (Virginia Economic Development Partnership)
- Offices in Ipswich, Madrid, and Munich
- Attracting key industries such as offshore wind, advanced manufacturing, and information technology
- Marketing Missions and International Trade Shows: Wind Energy Hamburg, EEEGR Wind Week, Wind Europe Bilbao
- Host prospective companies and international delegations: Pre-IPF, ANMPOYC, PIMEC and Spanish Embassy
- 12 Partnerships/ MOUs with trade organizations



# Services Provided Through VBED

Refining the “white glove” service for companies

- Site and Building Selection
- Permitting and Plan Review Assistance
- Workforce Development Support
- Relocation Needs
- International Advisory Committee
- Incubators
- Incentive Process
- Business Parks



# Soft Landing Spots

Three new facilities and partnerships to help businesses get established in Virginia Beach

- International Incubator with Orbis Energy as a partner
  - Temporary office for international companies
- Industrial Incubator
  - Temporary light industrial location for international companies and startups
  - 3-5 incubator spaces
  - Manufacturing and warehouse space
- The Hive
  - Business resource center
  - Programming around establishing a business



WRAP-UP

# Thank You



## Paige Fox

Business Development Manager  
Virginia Beach Department of Economic Development

Phone: 757.385.6464  
Email: [pmcgraw@vbgov.com](mailto:pmcgraw@vbgov.com)



[yesvirginiabeach.com](http://yesvirginiabeach.com)

[ecdev@vbgov.com](mailto:ecdev@vbgov.com)

# Seajack's success in the US

Ian Robertson, Seajacks





# Seajacks USA timeline

- In the early part of the 2010's it became obvious that a US wind industry would develop.
- In 2014 Seajacks started to investigate how to support and develop the US offshore wind industry working with partners like the Business Network for Offshore Wind
- In December 2018 Dominion Energy came in as the US partner
- In August 2020 a contract for New Build Supervision and O&M services were signed for a Jones Act compliant WTIV.
- In July 2021 Seajacks US opened their office in Town Center, Virginia Beach.







# Charybdis

- Blue Ocean Energy Marine, a Dominion Energy Company aims to deliver and operate a Jones Act Compliant Wind Turbine Installation Vessel (WTIV).
- The vessel is currently under construction in Seatrrium/Keppel AmFELS yard, Brownsville, Texas.
- Delivery expected Q4 2024

## Designed for

- Next generation multi-megawatt WTGs
  - Monopiles, Transition Pieces & Jackets
  - Offshore Transformer Modules
  - Major Component replacement
- 
- Currently contracted for WTG installation at Orsted's Sunrise Wind and Dominion's Coastal Virginia Offshore Wind (CVOW) projects.



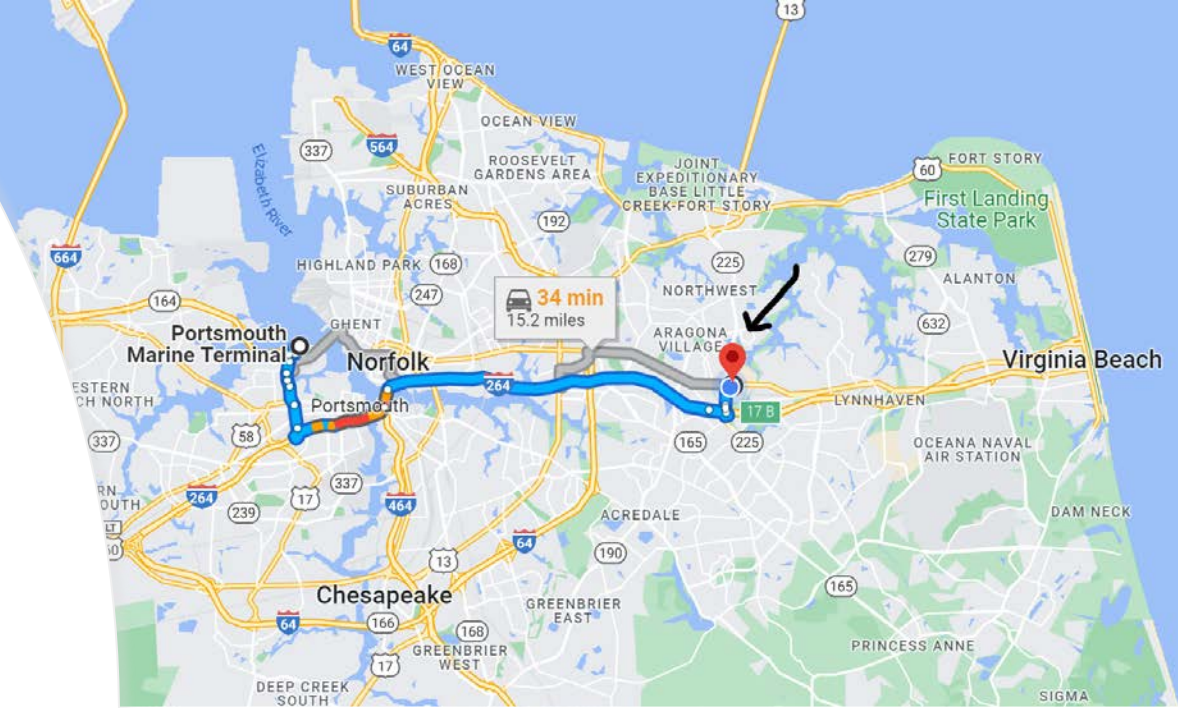
# Charybdis - Overview

<b>Type:</b>	GustoMSC NG 16,000X-SJ
<b>Class:</b>	ABS A1 – Self-elevating Unit + AMS + ACCU + DP2 Self-propelled + CRC + Wind IMR
<b>Flag:</b>	US – Portsmouth Marine Terminal, VA
<b>Regulatory:</b>	US Jones Act compliant, USCG, Zero Pollution compliant
<b>Length</b>	144m
<b>Breadth</b>	56m
<b>Leg length</b>	109m
<b>Water depth:</b>	Up to 65m
<b>Speed:</b>	10 knots
<b>Cranes:</b>	Main crane is wrap-around the starboard aft leg
<b>Boom length:</b>	130m
<b>Capacity:</b>	Main hoist 2,200T at 29m radius



# Where we work in the USA

- Name: The Gather (No it's not a cult)
- Location: Virginia Beach, VA @ 249 Central Park Avenue in Town Centre.
- The Gather is a communal workspace that offers a range of private offices, meeting rooms, individual study booths, communal events, and most importantly happy hour at 4-5.
- A US version of Orbis and where Seajacks originally started, Beacon Park





# The Port Of Virginia

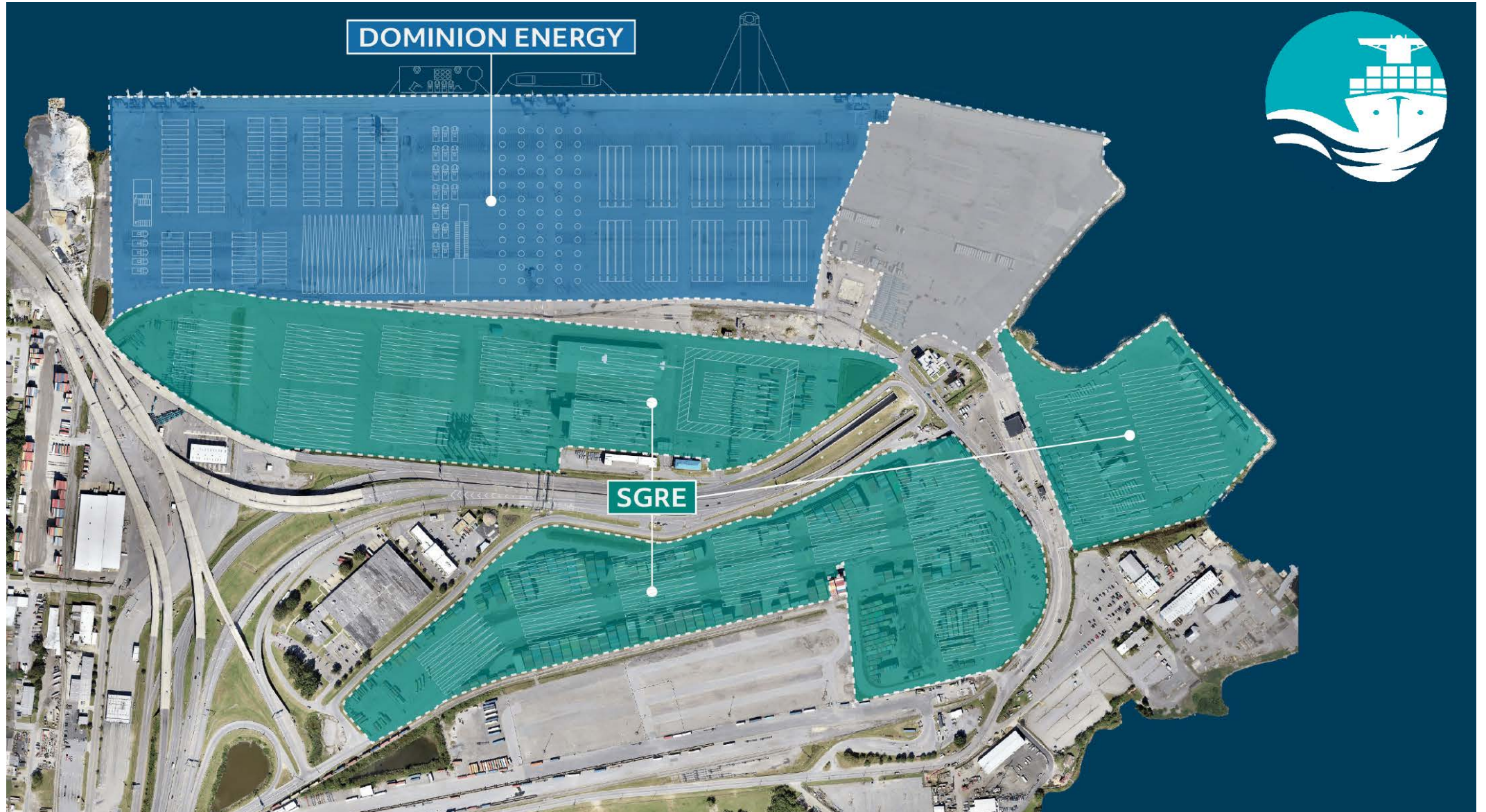
## Portsmouth Marine Terminal : PMT



- The Port of Virginia has become the offshore wind hub of the east coast.
- PMT is supporting CVOW (Coastal Virginia Offshore Wind) a Dominion Energy project.
- Has enough water depth for WITV operations with no overhead restrictions (bridges).
- PMT is the second largest of four marine facilities in Virginia with a land area of 219 acres.
- With the strong historical military presence in the area, the Virginia Beach area has the established engineering and logistic support needed for major offshore wind projects.

Parameter	US units	Metric units	Notes
<b>Property size</b>	287 acres	116 ha	The property is located on the Elizabeth River in an industrial and shipbuilding section of Portsmouth.
<b>Wharf/quayside</b>	3,540ft	1,078m	A concrete platform on piles bulkhead exists along the quayside of the facility.
<b>Additional quayside</b>	1,000ft	300m	An extension of the main quay allows for additional berthing.
<b>Berth depth at quayside</b>	38-40ft MLLW	6-7.3m MLLW	Multiple large berths exist end-to-end adjacent to the long main pier area.
<b>Main channel depth to site</b>	40-50ft	12-15m	Pinner Point to Town Point Reach.
<b>Buildings</b>	various	various	Approx. 10 buildings onsite (~65,000 total sqft/6,040sqm). Buildings range from brick building multi-story office and shop to large steel high-bay storage and warehouse buildings.
<b>Load bearing capacity*</b>	1,000-3,000psf (estimated)	4,880-14,640kgpsm	Load bearing capacity at the quayside is not well understood and at present is difficult to determine. Ground bearing in the parking lots site are expected to be at the low end of the range.

# Portsmouth Marine Terminal latest port infrastructure





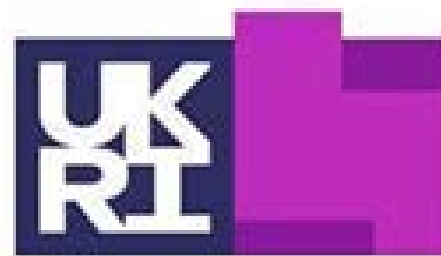
## Finally, why we chose Virginia Beach.

- Location, Location, Location first and foremost.
- Cost efficient in comparison to other east coast locations.
- Business focused and driven to get the job done.
- Based near to major infrastructure projects.
- Pull up a map of US wind projects and it becomes obvious !



# Innovate UK EDGE

Richard Allin, Innovate UK EDGE



Innovate  
UK  
EDGE

# EEEGR presentation

2023-10-27 12:26 UTC

Recorded by

Richard Allin

Organized by

Richard Allin





# Questions & Answers



Neil Mason

Business Relationship Manager, EEEGR

## EEEEGR Events

**5<sup>th</sup> December:** CCS Event supported by NSTA, Dunston Hall

**Evening of the 5<sup>th</sup> December:** End of Year Celebration and Awards

**13<sup>th</sup> December,** Launch of Onshore Renewable Sector Council. Energy Skills Centre, Lowestoft.

**14<sup>th</sup> December,** Marine Science and Technology Sector Council Forum meeting. Dragonfly House, Norwich

**24<sup>th</sup> January,** House of Commons Reception. Tickets booked via the EEEGR website

[www.eeegr.com/events](http://www.eeegr.com/events)

