

Restoring Meadows, Marshes and Reefs

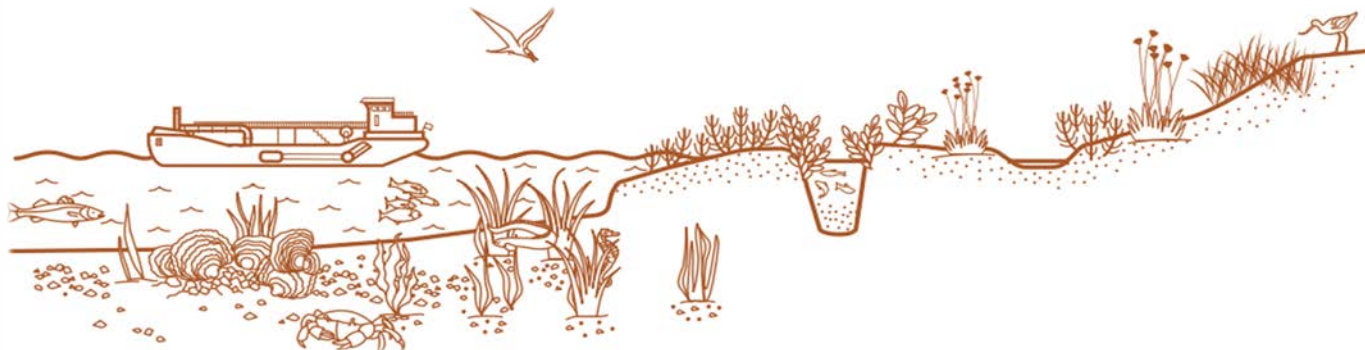
Will Manning
Estuaries and Coasts, Advisor
will.manning@environment-agency.gov.uk

11/05/2023

ReMeMaRe

Restoring Meadows, Marshes and Reefs (ReMeMaRe)

- * **Restoring Meadows Marshes and Reefs (ReMeMaRe)** (pronounced “re-memory”)
- * In England, over recent centuries, we have lost:
 - * Seagrass meadows from 50% of the water bodies where it was once found
 - * 85% of saltmarsh
 - * 95% of native oyster reefs
- * **Vision:** for restored estuarine and coastal (E&C) habitats that benefit people and nature
- * **Mission:** to restore *at least* 15% of our priority habitats along the English coast by 2043 (25 Year Environment Plan)
- * More information can be found on the [ReMeMaRe website](#)



ReMeMaRe Partnership (so far...)



ReMeMaRe Partnership

- * Steering Group and Partnership Group
 - * **Connectivity in Estuarine, Coastal and Transitional Ecosystem Restoration (ConnECTER) Special Interest Group (SIG)**
 - * **Beneficial Use Working Group (BUWG)**
- * Quarterly meetings and an annual [ReMeMaRe Conference](#) (11 – 12th July, 2023)
- * **ReMeMaRe Delivery Plan** will set the direction of how the partnership moves forward



Working Group 1

National Estuarine and Coastal Restoration Strategy

Working Group 2

Communication and Engagement

Working Group 3

Monitoring, Research and Evidence

Working Group 4

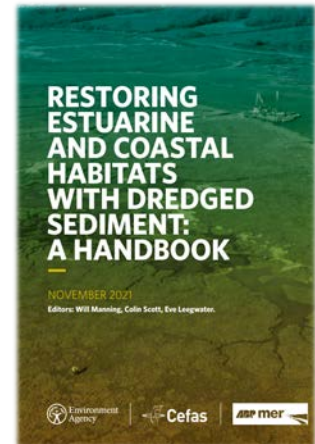
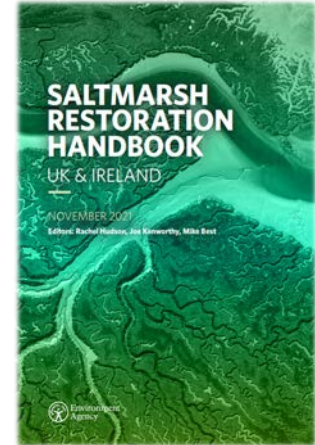
Policy, Legislation, Regulation and Licensing

Working Group 5

Funding and Finance

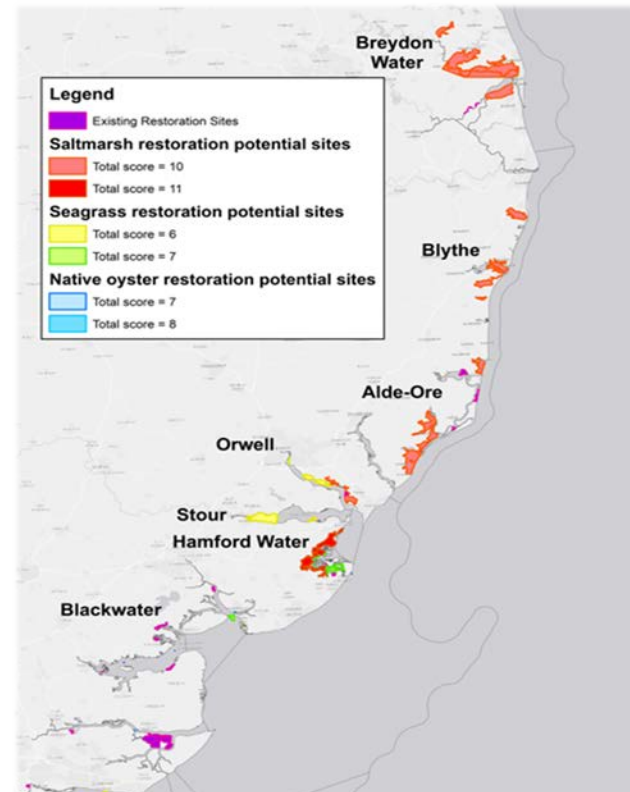
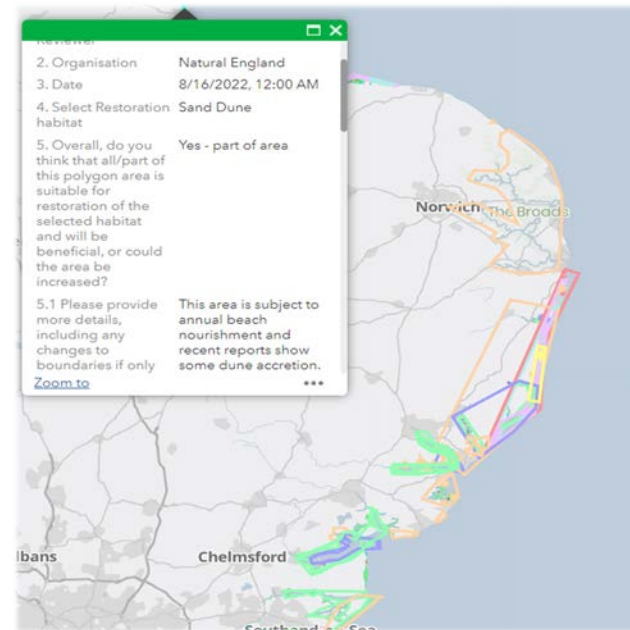
Habitat Restoration Handbooks

- * Provide practical guidance on **how** to restore the priority habitats and how the beneficial use of dredged sediment can be used as a tool to support restoration
- * Aims of the handbooks are to:
 - * Outline **current best practice**, knowledge gaps, research and thinking
 - * **Capture the knowledge** and expertise of the top practitioners and researchers
 - * Lead to **agreement of the guidance**
 - * **Deliver** further restoration and enhancement
- * Handbooks are available to download here:
 - * [Seagrass Restoration Handbook](#)
 - * [Saltmarsh Restoration Handbook](#)
 - * [European Native Oyster Restoration Handbook](#)
 - * [Restoring Estuarine and Coastal Habitats with Dredged Sediment](#)
- * [Infographics](#) are freely available on the ReMeMaRe website



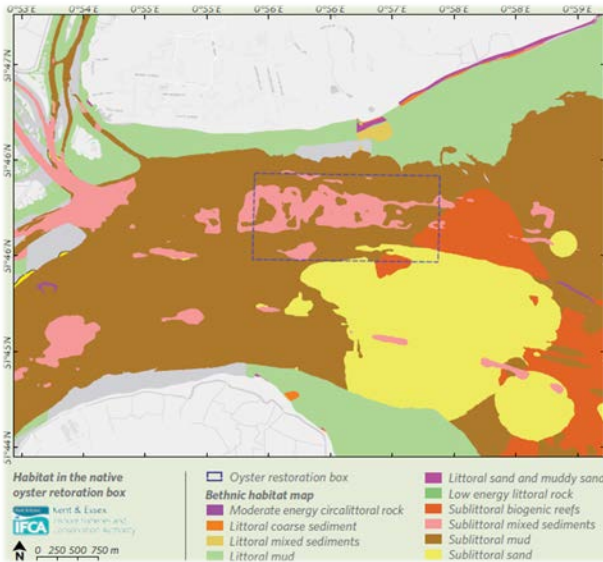
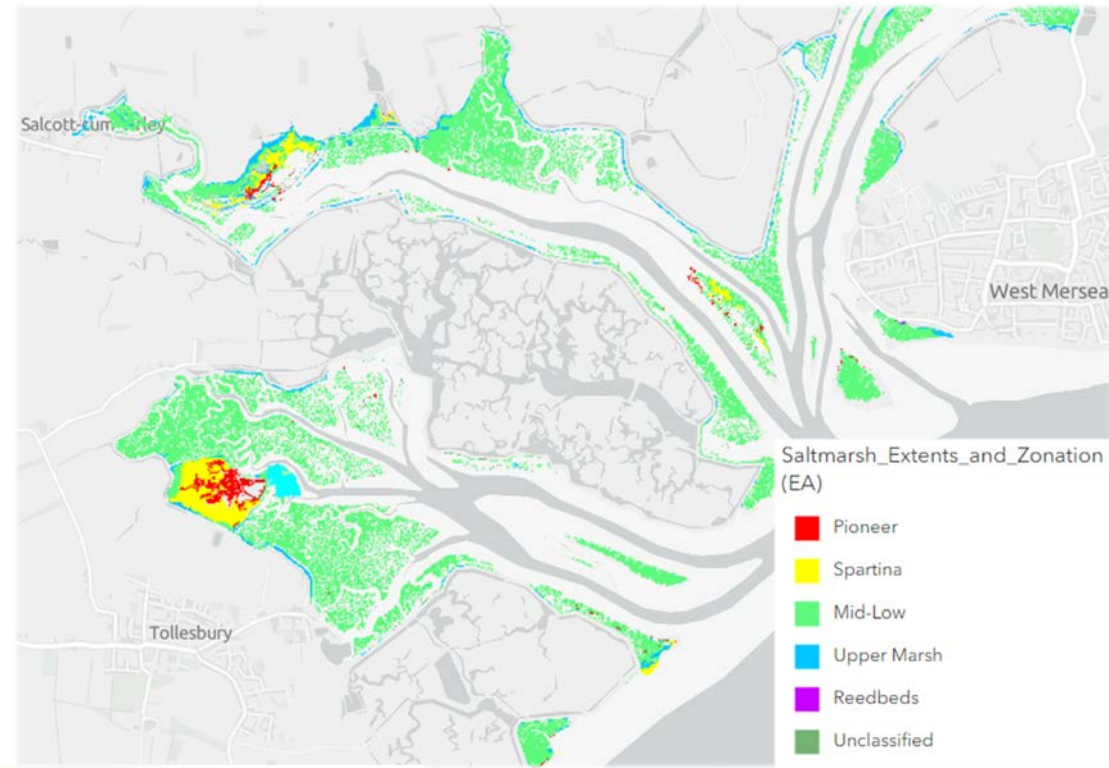
Restoration Potential Maps

- * Initially provided a high level (national) overview of **where** restoration of the priority habitats *might* be viable:
 - * [Seagrass](#)
 - * [Saltmarsh](#)
 - * [Native oyster](#)
 - * Sand dune
 - * Vegetated shingle ridge
 - * Maritime cliff
 - * Saline lagoon
- * **Aim is to provide a shortlist of potential restoration sites for each habitat, to help focus future investment and targeted effort**
- * Stages of assessment:
 - * **Habitat suitability modelling** (coarse national level)
 - * **Prioritisation** (natural capital and ecosystem service assessment)
 - * **Refinement and QC** (area level)
- * Due to complete and report on work to date later this year



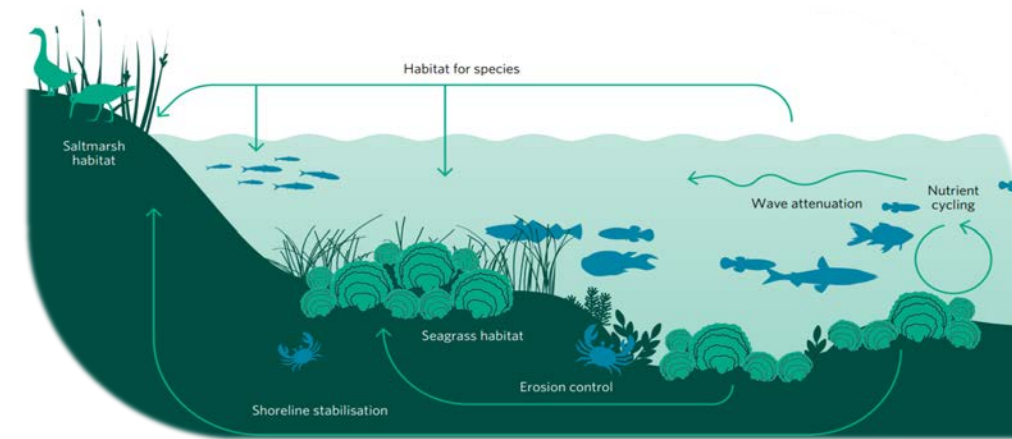
Data and Evidence

- * Based on monitoring, data and research, produce mapping layers to inform and support those planning restoration (available or being updated or produced):
 - * Saltmarsh change
 - * Saltmarsh extent and zonation
 - * **Grazed and ungrazed saltmarsh** (release tbc)
 - * Historic native oyster extent
 - * Seagrass extent
- * Support data collection and monitoring



Other Projects and Activities

- * **ConnECTER SIG**, habitat and ecosystem restoration research and the Seascape Statement
- * **Sediment Resource Database (SRD)**, supporting the beneficial use of dredged sediment
- * **Restoration Principles**, to support and provide more consistent advice to restoration activities, including those interacting with designated areas and/or features
- * **Aquaculture and Nursery Facilities**, to support market chain development and the upscaling of restoration projects
- * **Restoration Project Database**, to maintain oversight, co-ordinate and plan, report, learn and communicate restoration activities and outcomes



Marine Restoration Potential (MaRePo) on behalf of [Charlotte Johnson](#), Natural England

* Marine Restoration Potential (MaRePo), to support *recovery* of marine habitats offshore (1 to 200 nm):

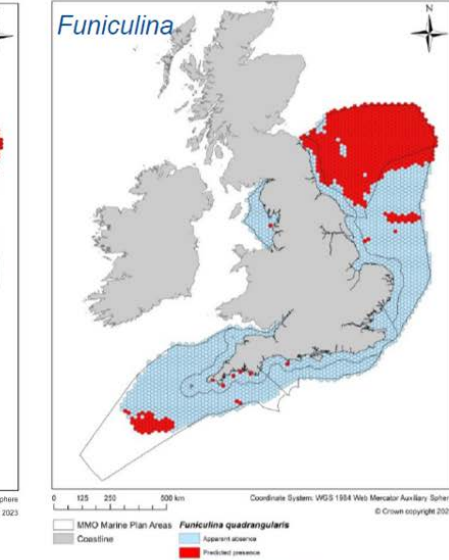
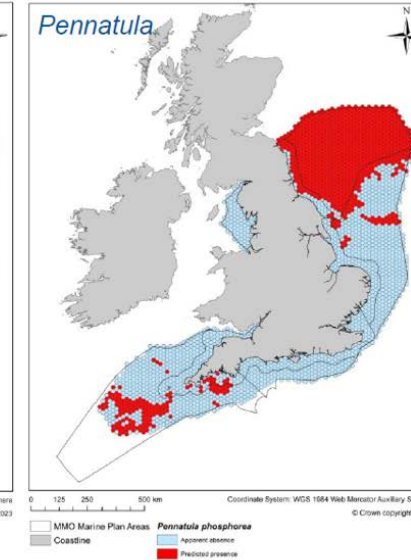
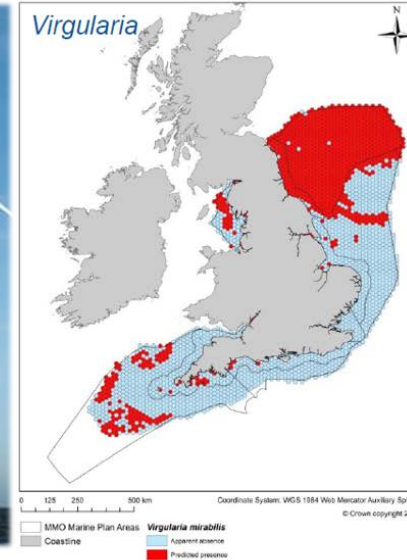
- * **Native oyster**
- * **Horse mussel**
- * **Kelp**
- * **Maerl beds**
- * **Seapens and burrowing megafauna**

* Mapped current and historic extents

* Draft restoration potential maps

* Next steps to refine and improve modelling:

- * **Climate change**
- * **Hard constraints**
- * **Other blue carbon habitats**





Thank you

Will Manning
Estuaries and Coasts, Advisor

Restoring Meadow, Marsh and Reef (ReMeMaRe)

will.manning@environment-agency.gov.uk

rememare@environment-agency.gov.uk