



Umair Patel Five Estuaries Project Manager

EEGR SNS

2023

Five Estuaries Offshore Windfarm



Wind farm area of 128km²



37km closest distance to shore in Suffolk



Up to 79 turbines across two separate seabed areas



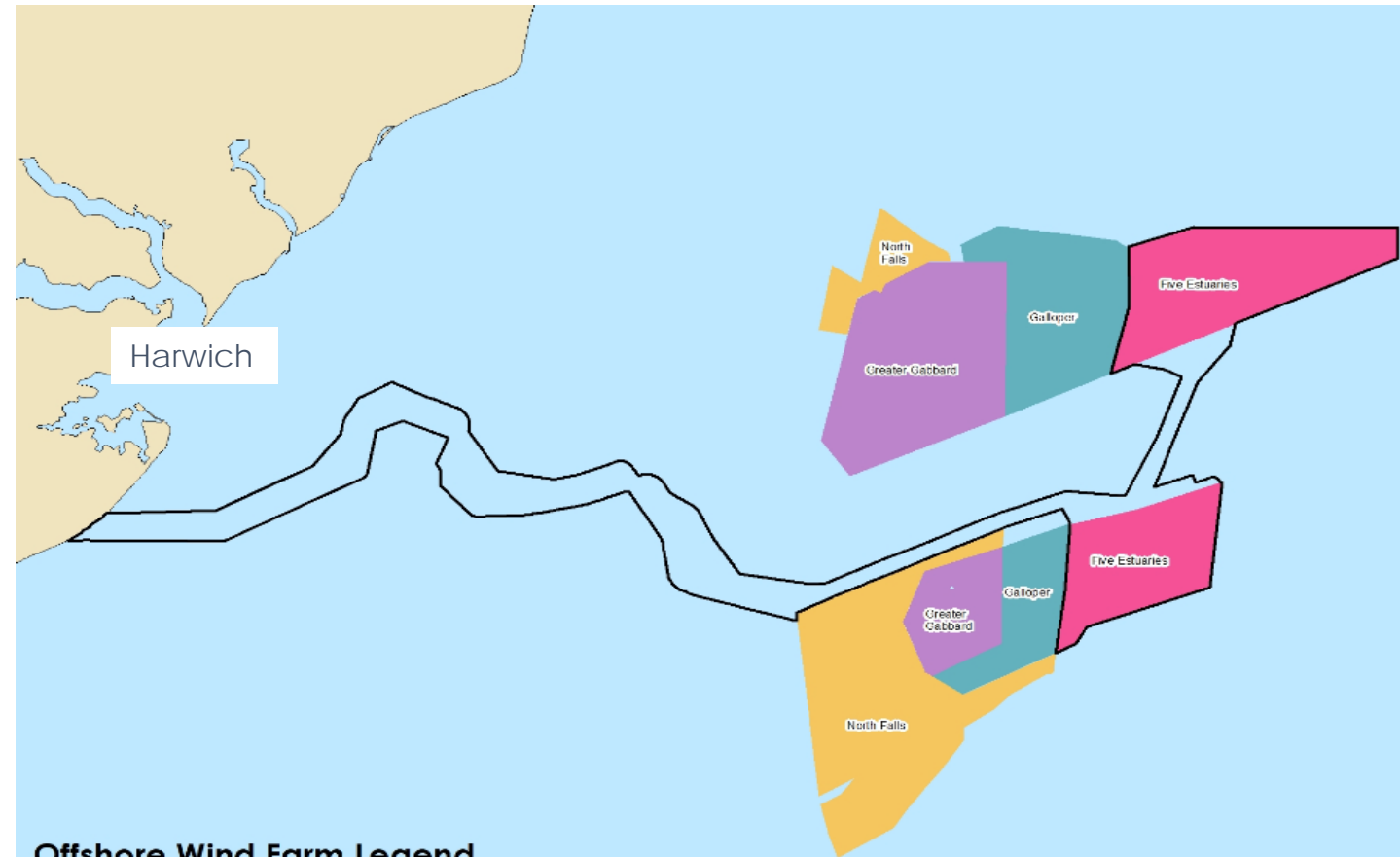
One new onshore substation to connect the project into the National Grid proposed East Anglia GREEN Connection Substation




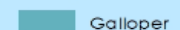
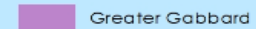

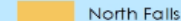
Could power hundreds of thousands UK households each year



Project Partners – RWE, a Macquarie-led consortium, Siemens financing arm, Siemens Financial Services, ESB and Sumitomo Corporation. RWE is leading the development



Offshore Wind Farm Legend

Five Estuaries Offshore Scoping Boundary		Nearby Wind Farm Sites In Operation	
	Five Estuaries Offshore Scoping Boundary		Galloper
Wind Farm Sites in Development			Greater Gabbard
	Five Estuaries		North Falls

Stage 2 Consultation

- 8-week consultation finished on 12 May
- **Ten** in person events across Essex, Suffolk and Kent
- **Two** online webinars
- **20** information points
- Over **450** attendees
- Received approximately **670** responses



Emerging key themes

Supportive of offshore wind and Five Estuaries

Desire to see an offshore connection

Concern regarding the impacts of the new onshore substation and cumulative impacts with other projects

Concern around impact on water utilities / drainage

Concern about the loss of farmland (temporary and permanent)

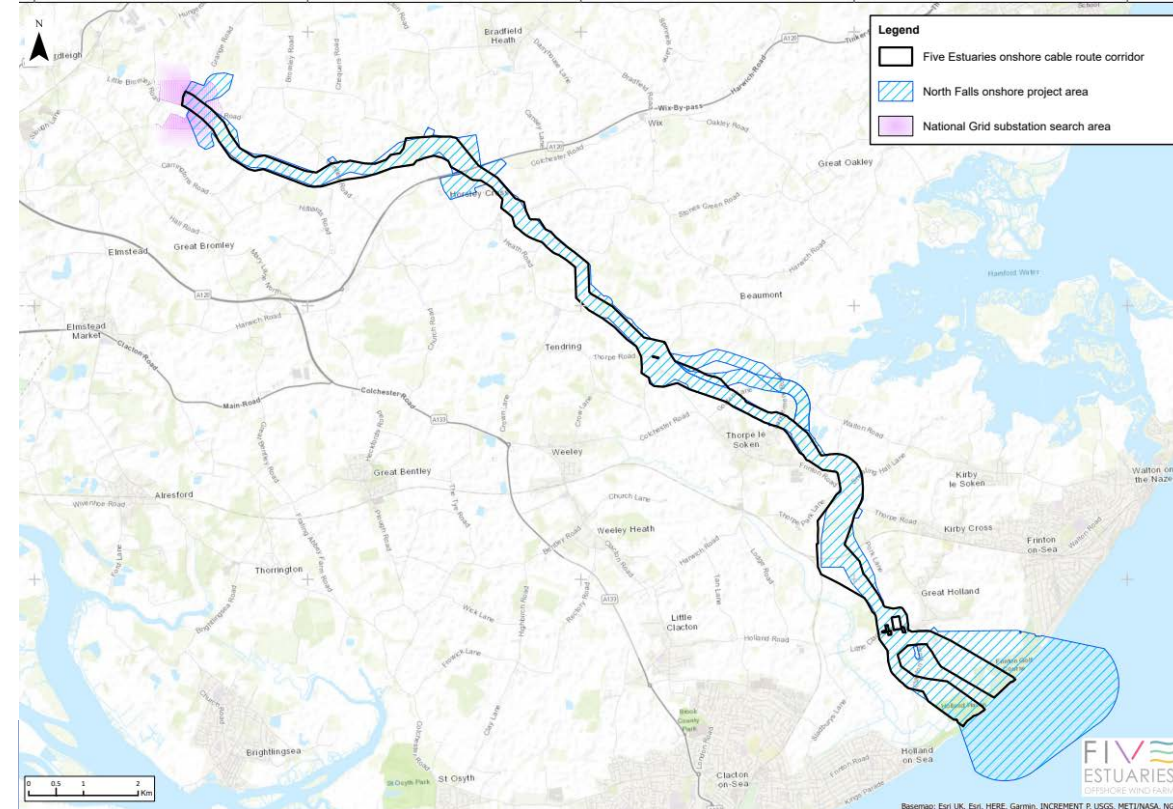
Comments around the suitability of the road network during construction

Positive feedback on engagement, the consultation process and level of information provided

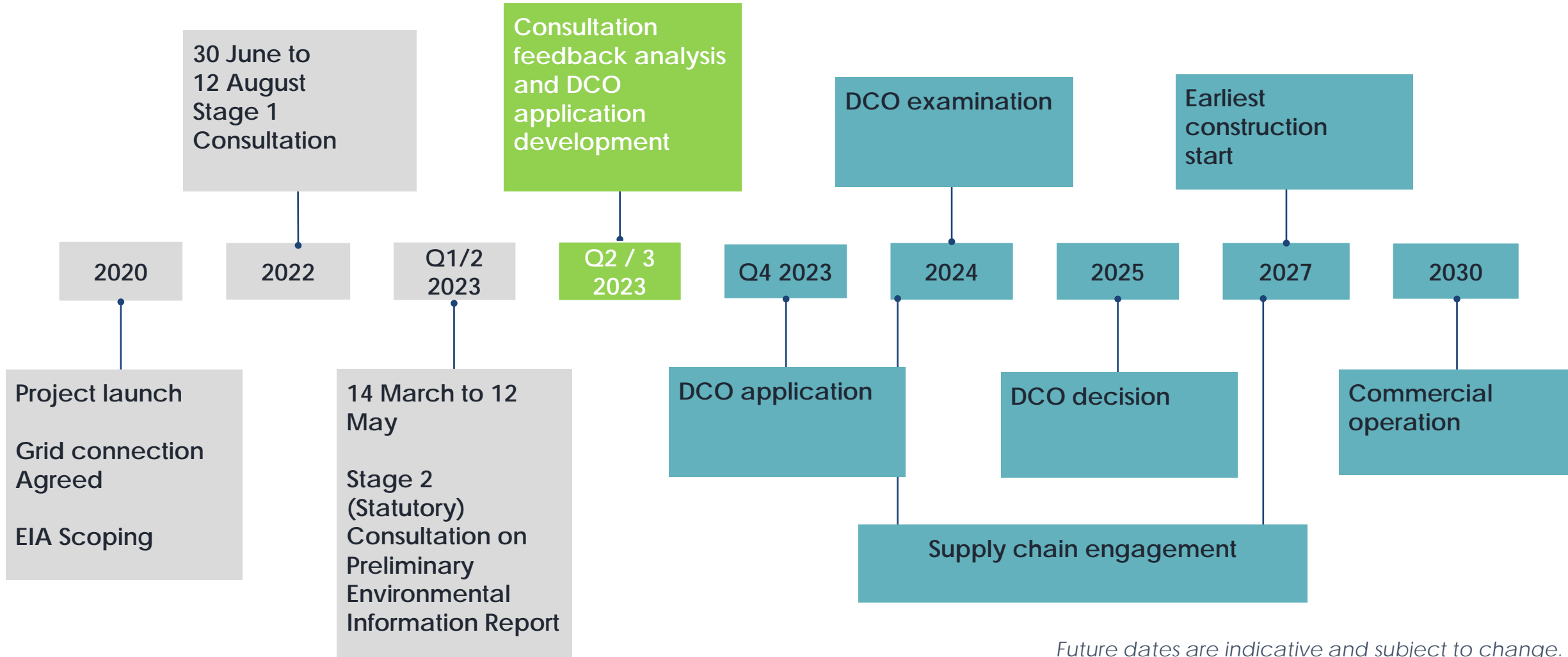
Questions around actually building the onshore connection

Working with North Falls

- Onshore export cable corridor definition
- Approach to identifying works accesses and construction compounds
- Ecology, archaeology and noise surveys
- Landowner engagement
- Shared navigational risk assessment workshop outputs
- Approach to cumulative seascape, landscape and visual impact assessment
- Joint stakeholder engagement where possible



Project Timeline



Future dates are indicative and subject to change.

Industry Challenges

1

EMPLOYMENT

Skills shortages within the sector. Lack of awareness around re-skilling and transition opportunities.

2

EDUCATION

Teachers' lack of knowledge (and time) to provide guidance on full scope of career opportunities and education routes.

3

SUPPLY CHAIN

Lack of visibility of new suppliers in comparison to established players, and availability of local training provision.

Outline Skills & Employment Strategy

Supporting the whole career including key influencers (parents, teachers etc)

- Primary and secondary education
- Tertiary – (links with innovation & R&D)
- Early-stage careers – work experience, apprenticeships, traineeships/internships
- Upskilling/CPD of existing employees

Employment & training

- Encouraging and supporting growth and employment in local supply chain companies
- Helping local SMEs to be visible to the employment market
- Promoting training & employment opportunities to local residents
- Supporting transition from other sectors – military, fossil fuel based sectors etc
- Opportunities to collaborate with other developers, tier 1s, supply chain

Expanding the talent pool

- Unemployed, under-employed, employment poverty & economically inactive
- Raising aspirations
- Improving employability skills



Created through the diversity and inclusion lens including gender, ethnicity, social mobility and disability

Supply Chain Plan

A Supply Chain Plan is a document of commitments covering the following categories.

Green Growth

Ensuring the push to Net Zero creates new economic opportunities for a range of actors and helps establish new low carbon industries

Innovation

Nurturing and commercialising innovative technologies to reduce the costs of projects and overcome technical challenges whilst contributing to Net Zero objectives

Infrastructure

Decarbonising supply chains, while increasing investment in supply chain capacity and logistics

Skills

Developing a diverse, skilled workforce and increasing employment opportunities, while ensuring the renewable energy industry reflects society as a whole and operates ethically and safely

How can the Supply Chain Prepare Itself?

1



Solid UK and international **growth pipelines** means many opportunities

2



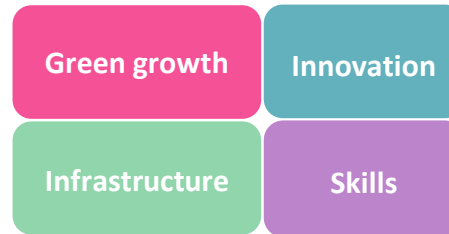
Strong and collaborative supply chain is vital to investment

3



Understand where you **fit in the supply chain** and align your offering with requirements

4



Familiarise yourself with the supply chain policy scene **new requirements, industry challenges, ambitions and criteria**

5



To maximise opportunities, be prepared to work with us to **respond to the criteria and feed in challenges, suggestions, ideas**

Supplier Transparency & Engagement Programme (STEP)

- RWE's new and proactive approach to supplier engagement
- Aimed at improving transparency, engagement and information exchange regarding our UK projects progressing through development.



1. Dedicated project websites
2. Supplier Engagement Platforms
3. Supplier Engagement Days
4. Supplier Engagement Booking Tool



GET IN TOUCH

0333 880 5306

fiveestuaries@rwe.com

Register your email on our website to receive regular project updates.

www.fiveestuaries.com

